

# Bit-Check 30 Zyklus Mini 1, 31 pieces

## Zyklus Mini 1



<b>EAN:</b>	4013288144652	<b>Size:</b>	160x85x30 mm
<b>Part number:</b>	05073640001	<b>Weight:</b>	366 g
<b>Article number:</b>	Bit-Check 30 Zyklus Mini 1	<b>Country of origin:</b>	CZ
		<b>Customs tariff number:</b>	82079030

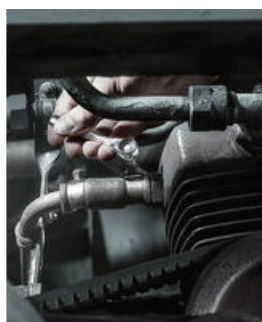
- Bit-Checks convince due to their functionality in a minimum of space
- Wera Mini ratchet for particularly fast screwdriving even in confined spaces
- Ideal for working in confined spaces
- Tough viscous bits for universal use
- In handy and robust Bit-Check

Wera Zyklus Mini 1: a symbiosis of strength and stylishness. Incredibly robust due to its drop-forged, full-steel design. Can withstand torque forces up to 65 Nm. The petite sizing is particularly suited for work in confined spaces. The thumbwheel allows fast screwdriving. Comes in a set in the proven Wera Bit-Check with socket adaptor and belt clip. Simple tool removal and reinsertion is ensured, very robust and durable.

### The Zyklus Mini Ratchets

### Small return angle

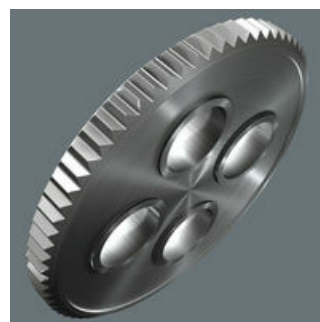
### Rapid screwdriving



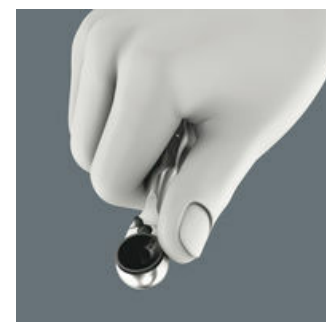
Zyklus Mini



For all difficult-to-access applications.



The fine tooth mechanism, with its 60 teeth, allows a small return angle of only 6° - ideal for precision work.



Thumbwheel enables rapid screwdriving, even when there isn't sufficient room for ratcheting use.

### Web link

[https://products.wera.de/en/zyklus\\_ratchets\\_and\\_accessories\\_zyklus\\_mini\\_zyklus\\_mini\\_1\\_bit-check\\_30\\_zyklus\\_mini\\_1.html](https://products.wera.de/en/zyklus_ratchets_and_accessories_zyklus_mini_zyklus_mini_1_bit-check_30_zyklus_mini_1.html)

Wera - Bit-Check 30 Zyklus Mini 1  
05073640001 - 4013288144652

Wera Werkzeuge GmbH  
Korzerter Straße 21-25  
D-42349 Wuppertal  
Tel: +49 (0)2 02 / 40 45-0  
E-Mail: [info@wera.de](mailto:info@wera.de)

Zyklop Mini 1

Simple direction change



Simple switching between left/right operations.

Slim design



Its slim design makes it ideal for all particularly confined working situations.

Is such a small tool sufficiently resilient?



The Zyklop Mini 1 can withstand at least 65 Nm. That is far more power than can normally be transferred to such a small tool.

What parts can be connected to the Zyklop Mini 1?



Bits and sockets. Bits can be connected directly. However, a holder can be connected first and then the bit can be attached to this. This then serves as an extension with a free-turning sleeve. An adaptor e.g. Wera 870/1 is needed for sockets - 1/4" hexagonal on a square drive (included in the Bit-Check and with the individual Zyklop Mini 1 in the set).

Web link

[https://products.wera.de/en/zyklop\\_ratchets\\_and\\_accessories\\_zyklop\\_mini\\_zyklop\\_mini\\_1\\_bit-check\\_30\\_zyklop\\_mini\\_1.html](https://products.wera.de/en/zyklop_ratchets_and_accessories_zyklop_mini_zyklop_mini_1_bit-check_30_zyklop_mini_1.html)

Wera - Bit-Check 30 Zyklop Mini 1  
05073640001 - 4013288144652

Wera Werkzeuge GmbH  
Korzter Straße 21-25  
D-42349 Wuppertal  
Tel: +49 (0)2 02 / 40 45-0  
E-Mail: [info@wera.de](mailto:info@wera.de)

# Bit-Check 30 Zyklus Mini 1, 31 pieces

## Zyklus Mini 1



### Set contents:

8001 A Bit Ratchet 1/4", 1/4" x 87 mm



1x 1/4" x 87 mm



870/1 Adaptor, 1/4" x 25 mm



0513600001<sup>1)</sup> 1x 1/4" x 25 mm

1) With friction ball; for manual nut spinner sockets



889/4/1 K Rapidaptor Universal Bit Holder, 1/4" x 50 mm



05052502001 1x 1/4" x 50 mm



851/1 TZ bits, PH 1 x 25 mm



05056505001 2x PH 1 x 25 mm

05056510001 3x PH 2 x 25 mm

05056525001 1x PH 3 x 25 mm



### Web link

[https://products.wera.de/en/zyklus\\_ratchets\\_and\\_accessories\\_zyklus\\_mini\\_zyklus\\_mini\\_1\\_bit-check\\_30\\_zyklus\\_mini\\_1.html](https://products.wera.de/en/zyklus_ratchets_and_accessories_zyklus_mini_zyklus_mini_1_bit-check_30_zyklus_mini_1.html)

Wera - Bit-Check 30 Zyklus Mini 1  
05073640001 - 4013288144652

Wera Werkzeuge GmbH  
Korzter Straße 21-25  
D-42349 Wuppertal  
Tel: +49 (0)2 02 / 40 45-0  
E-Mail: [info@wera.de](mailto:info@wera.de)

## Bit-Check 30 Zyklus Mini 1, 31 pieces

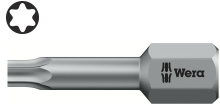
### Zyklus Mini 1

#### 855/1 TH bits, PZ 1 x 25 mm



05056910001	1x	PZ 1 x 25 mm
05056915001	3x	PZ 2 x 25 mm
05056925001	1x	PZ 3 x 25 mm

#### 867/1 TZ TORX® bits, TX 10 x 25 mm



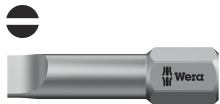
05066305001	1x	TX 10 x 25 mm
05066308001	1x	TX 15 x 25 mm
05066310001	1x	TX 20 x 25 mm
05066312001	1x	TX 25 x 25 mm
05066315001	1x	TX 30 x 25 mm
05066320001	1x	TX 40 x 25 mm

#### 867/1 Z TORX® B0 bits with bore hole, TX 10 x 25 mm



05066500001	1x	TX 10 x 25 mm
05066505001	1x	TX 15 x 25 mm
05066510001	1x	TX 20 x 25 mm
05066515001	1x	TX 25 x 25 mm
05066525001	1x	TX 30 x 25 mm

#### 800/1 TZ bits, 1 x 5.5 x 25 mm



05056225001	1x	1 x 5.5 x 25 mm
-------------	----	-----------------

#### 840/1 Z bits, 3 x 25 mm



05056315001	1x	3 x 25 mm
05056320001	1x	4 x 25 mm
05056325001	1x	5 x 25 mm
05056330001	1x	6 x 25 mm
05056335001	1x	8 x 25 mm

#### Web link

[https://products.wera.de/en/zyklus\\_ratchets\\_and\\_accessories\\_zyklus\\_mini\\_zyklus\\_mini\\_1\\_bit-check\\_30\\_zyklus\\_mini\\_1.html](https://products.wera.de/en/zyklus_ratchets_and_accessories_zyklus_mini_zyklus_mini_1_bit-check_30_zyklus_mini_1.html)

Wera - Bit-Check 30 Zyklus Mini 1  
05073640001 - 4013288144652

Wera Werkzeuge GmbH  
Korzter Straße 21-25  
D-42349 Wuppertal  
Tel: +49 (0)2 02 / 40 45-0  
E-Mail: [info@wera.de](mailto:info@wera.de)