



<b>EAN:</b>	4013288119285	<b>Size:</b>	153x116x41 mm
<b>Part number:</b>	05104655001	<b>Weight:</b>	390 g
<b>Article number:</b>	845/8	<b>Country of origin:</b>	CZ
		<b>Customs tariff number:</b>	82075060

- Ideal for mobile repair and assembly work
- Rapid, uncomplicated change between drill, countersinking or screwdriving bit
- 1/4" drive suitable for power screwdrivers
- For countersinking and deburring
- 1-flute

8-piece countersink bit set in a stable plastic box for countersinking and deburring. The hexagonal shaft ensures very good power transfer. Ensures rattle and score-free working. Perfect chip removal and great durability. High quality, ergonomic bit holder equipped with a magnet. The Rapidaptor ensures rapid bit change without any extra tools. For insertion in the power screwdriver or for use in the chuck of the electric drill.

### Web link

[https://products.wera.de/en/bits\\_holders\\_adaptors\\_and\\_sets\\_bit\\_sets\\_bit\\_sets\\_for\\_special\\_applications\\_845\\_8.html](https://products.wera.de/en/bits_holders_adaptors_and_sets_bit_sets_bit_sets_for_special_applications_845_8.html)

Wera - 845/8  
05104655001 - 4013288119285

Wera Werkzeuge GmbH  
Korzerter Straße 21-25  
D-42349 Wuppertal  
Tel: +49 (0)2 02 / 40 45-0  
E-Mail: [info@wera.de](mailto:info@wera.de)

### 1-flute countersink bit



1-flute countersink bits, 90° • Application: Deburring, chamfering and countersinking • 1/4" drive suitable for holders as per DIN 3126-D 6.3 (ISO 1173) • Hexagon shaft for very high torque transfer • 1 tip • Guaranteed vibration-free and scratch-free operation • Optimal countersink surface quality • Long service life • Perfect chip removal • High corrosion protection

### Kraftform



The basic idea for the prototype of the Kraftform handle - that the hand should dictate the design - has, right through to today, proved to be correct. In cooperation with the internationally recognised Fraunhofer IAO Institute, Wera developed a screwdriver handle designed to match the shape of the human hand as long ago as the 1960s. After a long development phase, the Wera Kraftform handle was launched to the market in 1968. It has been optimised through the years with new technologies, but has kept its proven shape. After all, the human hand has not changed either.

### Rapidaptor holder



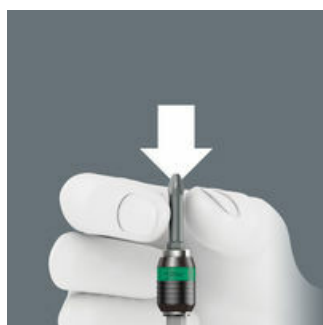
Rapid bit change without needing any additional tools. One-hand operation with a freely spinning sleeve for simplified guidance of the tool.

### Chuck-all



The Rapidaptor quick-release chucks hold 1/4" DIN ISO 1173-C 6,3 and E 6,3 as well as Wera series 1 and 4 bits.

### Rapid-in and self-lock



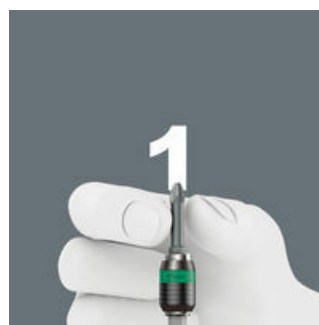
The bit can be pushed into the adaptor without moving the sleeve. The lock is activated automatically as soon as the bit is applied to the screw. Bits are held securely and wobble-free.

### Rapid-out



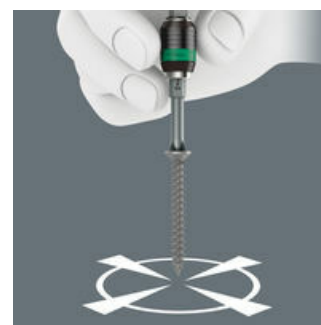
Simply push the sleeve forward to change the bit. The spring mechanism lifts the bit off the magnet and unlocks the tool. The bit can be easily removed. The rapid-out function makes it easy to remove even the smallest bits without extra tools.

### Single-hand function



Every function of the Rapidaptor quick-release chuck, such as inserting or releasing bits, can be carried out with one hand. This is faster, more economical and more ergonomic. There are no unnecessary manoeuvres.

### Rapid-spin



The free-turning sleeve allows screw steadying at the start of the screwdriving process. This makes it easier to apply the tool to the screw and prevents slipping. It can also be used as a short extension for 1/4" applications e.g. in combination with the Wera Zyklus Ratchets.

### Web link

[https://products.wera.de/en/bits\\_holders\\_adaptors\\_and\\_sets\\_bit\\_sets\\_bit\\_sets\\_for\\_special\\_applications\\_845\\_8.html](https://products.wera.de/en/bits_holders_adaptors_and_sets_bit_sets_bit_sets_for_special_applications_845_8.html)

Wera - 845/8

05104655001 - 4013288119285

Wera Werkzeuge GmbH

Korzerter Straße 21-25

D-42349 Wuppertal

Tel: +49 (0)2 02 / 40 45-0

E-Mail: [info@wera.de](mailto:info@wera.de)

## 845/8 1-flute Countersink Bits Set, 8 pieces

### Bit Sets for Special Applications



#### Set contents:

#### 816 R Bitholding screwdriver with Rapidaptor quick-release chuck, 1/4" x 119 mm



05051462001

1x 1/4" x 119 mm



#### 888/4/1 K Rapidaptor Universal Bit Holder, 1/4" x 50 mm



05052500001

1x 1/4" x 50 mm



#### 845 1-flute Countersink Bits, 6.30 x 32 mm



05104660001

1x 6.30 x 32 mm

05104661001

1x 8.30 x 32 mm

05104662001

1x 10.40 x 34 mm

05104663001

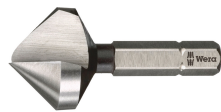
1x 12.40 x 36 mm

05104664001

1x 16.50 x 40 mm

05104665001

1x 20.50 x 43 mm



#### Web link

[https://products.wera.de/en/bits\\_holders\\_adaptors\\_and\\_sets\\_bit\\_sets\\_bit\\_sets\\_for\\_special\\_applications\\_845\\_8.html](https://products.wera.de/en/bits_holders_adaptors_and_sets_bit_sets_bit_sets_for_special_applications_845_8.html)

Wera - 845/8

05104655001 - 4013288119285

Wera Werkzeuge GmbH

Korzerter Straße 21-25

D-42349 Wuppertal

Tel: +49 (0)2 02 / 40 45-0

E-Mail: [info@wera.de](mailto:info@wera.de)