

REV	DATE	DRAWN/CHKD	DESCRIPTION	PART NUMBER	SCREW PROJECTION		PANEL THICKNESS		B	L
					P-1	P-2	A, MIN	A, MAX		
A	10OCT2007	GDW	PRN: P2007-1268	47-10-1X0-YZ	.07	.20	-	.031	.079	.101
				47-11-1X0-YZ	.13	.26				
				47-12-1X0-YZ	.19	.32				
				47-10-1X1-YZ	.07	.20				
				47-11-1X1-YZ	.13	.26	.031	.063	.110	.132
				47-12-1X1-YZ	.19	.32				
				47-10-1X2-YZ	.13	.26	.063	.094	.142	.164
				47-11-1X2-YZ	.19	.32				
				47-10-1X3-YZ	.13	.26	.094	.126	.173	.195
				47-11-1X3-YZ	.19	.32				
				47-10-1X4-YZ	.19	.32	.126	.157	.205	.226
				47-10-1X5-YZ	.19	.32	.157	.189	.236	.257

INCHES

ALL DIMENSIONS WITHOUT TOLERANCES ARE FOR REFERENCE ONLY.

THIRD ANGLE PROJECTION

B PAPER SIZE

MATERIAL AND FINISH:

KNOB: 6000 SERIES ALUMINUM, NATURAL OR BLACK POWDER COATED

SCREW: 400 SERIES STAINLESS STEEL, PASSIVATED; OR HARDENED CARBON STEEL, ZINC PLATE, CHROMATE PLUS SEALER (SEE "Z" TABLE) (NOTE: KNOB AND TOP OF SCREW AVAILABLE WITH POWDER COATING; SEE "Y" TABLE)

FERRULE: 6000 SERIES ALUMINUM, NATURAL

SPRING: 300 SERIES STAINLESS STEEL, PASSIVATED

WASHER: 300 SERIES STAINLESS STEEL, PASSIVATED

"X" SCREW RECESS

- 1 - SLOTTED
- 3 - No. 1 PHILLIPS
- 5 - T10 TORX®
- 7 - T10 TORX®/SLOT COMBINATION
- 9 - No. 1 PHILLIPS/SLOT COMBINATION

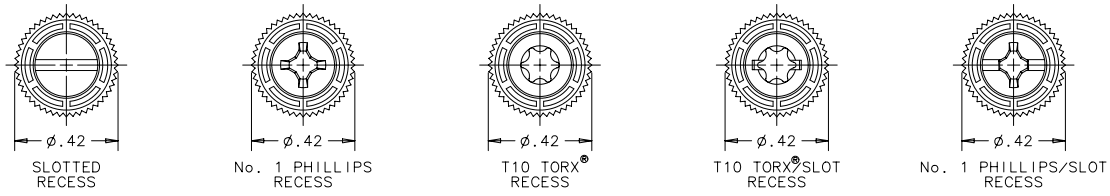
"Y" FINISH ON KNOB & SCREW HEAD

- 1 - BRIGHT
- 4 - CUSTOM COLOR. SEE J-47-0-3 FOR ADDITIONAL SUFFIX
- 5 - BLACK POWDER COATED

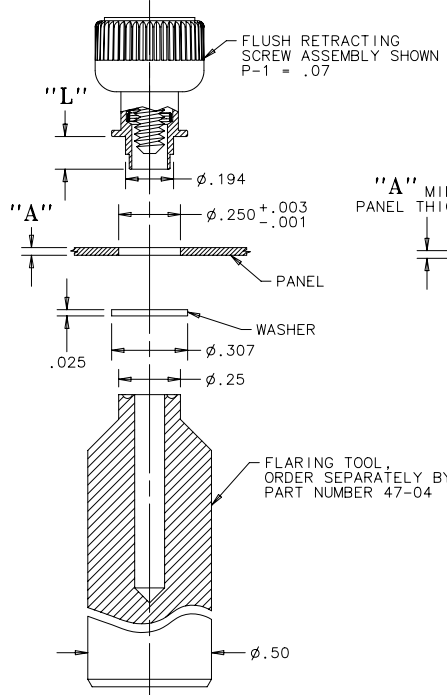
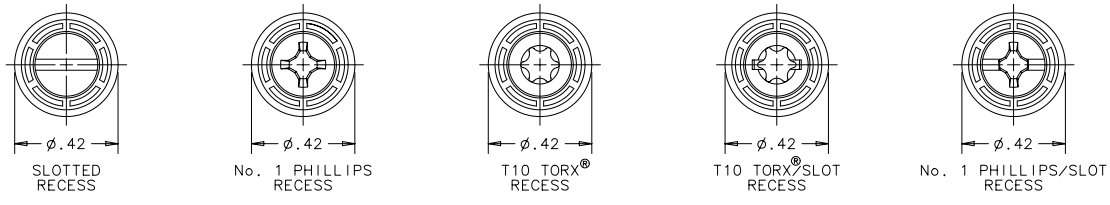
"Z" KNOB TYPE AND SCREW MATERIAL

KNOB	SCREW MATERIAL	RECESS	
		SLOTTED TORX® PHILLIPS/SLOT	TORX®/SLOT
KNURLED	STAINLESS STEEL	0	N/A
SMOOTH	STAINLESS STEEL	1	N/A
KNURLED	STEEL	4	0
SMOOTH	STEEL	5	1

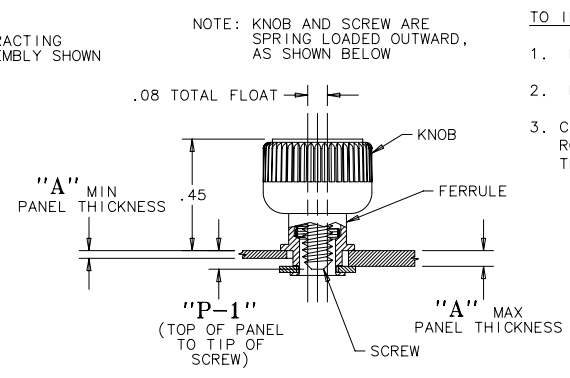
KNURLED KNOBS



SMOOTH KNOBS

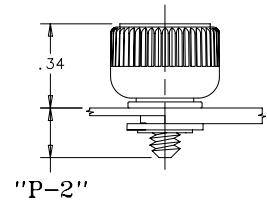


PANEL PREPARATION
PART NUMBER: 47-10-1X1-Y0 SHOWN

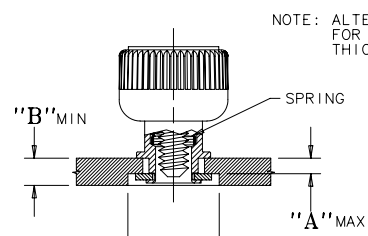


UNFASTENED
PART NUMBER: 47-10-1X1-Y0 SHOWN

- TO INSTALL FASTENER:**
1. DRILL OR PUNCH HOLE AS SHOWN BELOW.
 2. PLACE FERRULE INTO INSTALLATION HOLE.
 3. CENTER TOOL ON THE SCREW THREAD, THEN ROLL FERRULE OVER WASHER TO CAPTIVATE THE ASSEMBLY.



FASTENED
PART NUMBER: 47-10-1X1-Y0 SHOWN



NOTE: ALTERNATE INSTALLATION FOR FLUSHNESS AND/OR THICKER PANELS

COUNTERBORE OPPOSITE SIDE OF PANEL ϕ .37 MIN, LEAVING A THICKNESS OF "A" MAX