

REVISION HISTORY			
REV	DATE	BY	DESCRIPTION
B	18APR2019	JQ/LC	PRN: P2019-1029

NOTES:

A. INSTALLATION INSTRUCTIONS:

1. DRILL OR PUNCH  $\varnothing 7.14 \pm 0.08$  HOLE IN OUTER PANEL.
2. PRESS STUD FIRMLY TO HOLD TEETH OF FERRULE AGAINST PANEL. THREAD SLEEVE NUT INTO FERRULE AND TIGHTEN WITH WRENCH SOUTHCO PART NUMBER 56-0-22041-03.

B. MATERIAL AND FINISH:

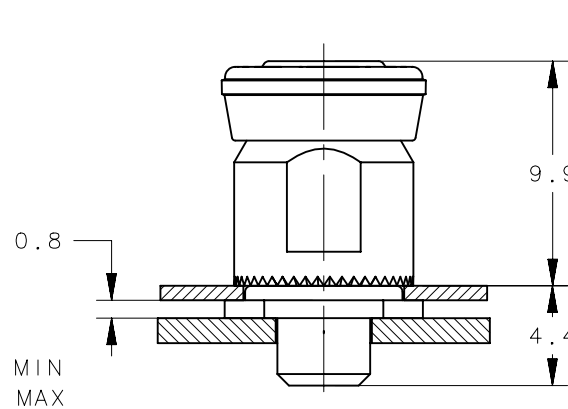
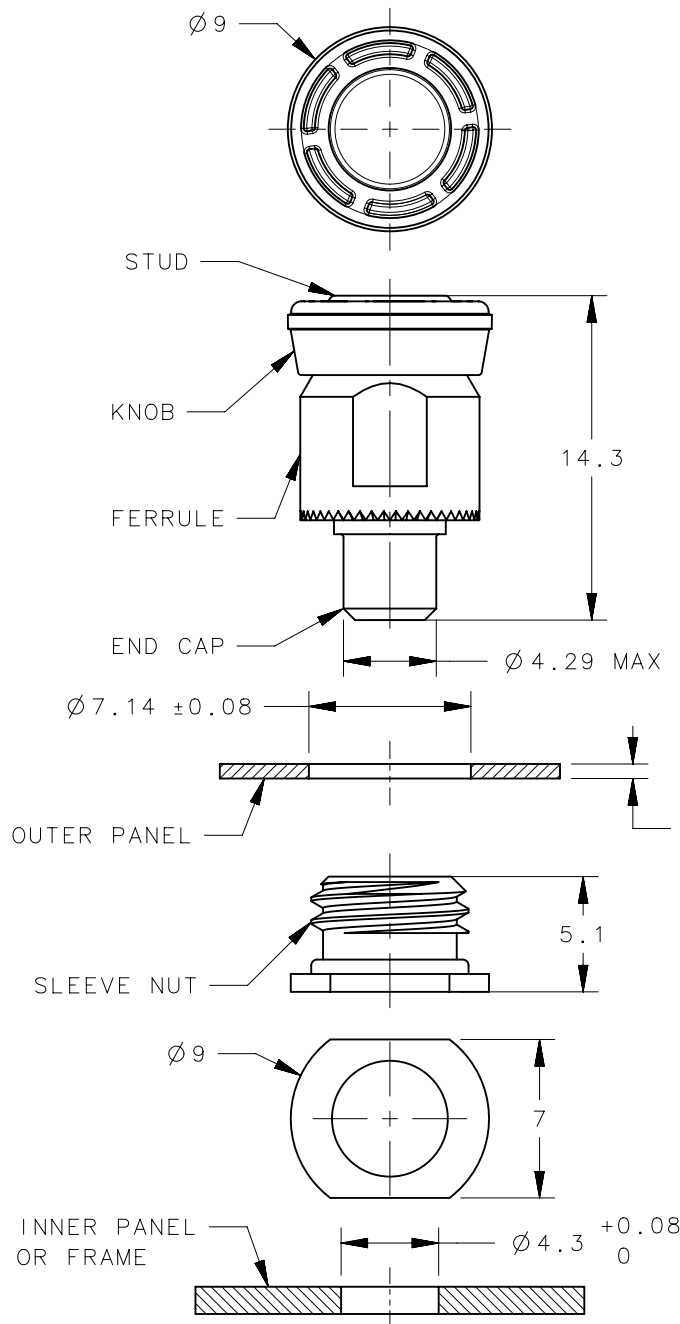
1. STUD: HARDENED STEEL, ZINC PLATE PLUS SEALER.
2. KNOB: PC/ABS, UL94 V0 RATED.
3. SPRING: 300 SERIES SATINLESS STEEL, PASSIVATED.
4. END CAP, FERRULE AND SLEEVE NUT: STEEL, ZINC PLATED PLUS SEALER.

C. COSMETIC SPECIFICATION: ALL SURFACES (UNLESS OTHERWISE SPECIFIED) ARE TO BE PER SOUTHCO SPECIFICATION S-121-02, CLASS B, FERRULE AND SLEEVE NUT CLASS C.

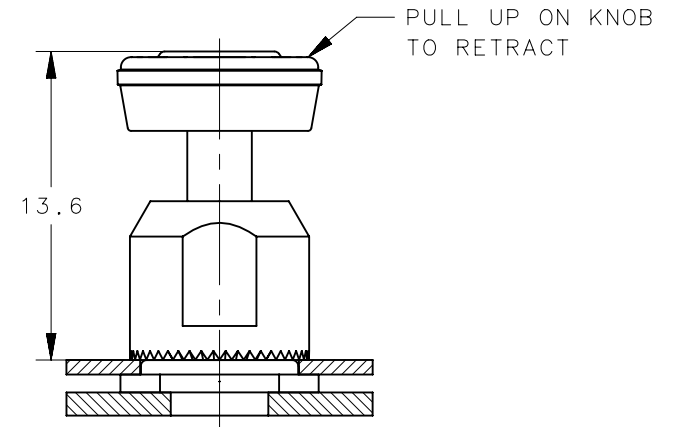
D. PARTS SHIPPED BULK.



SCALE 1:1



RELEASED



RETRACTED

"EEE" KNOB COLOR  
000 BLACK  
SEE J-47-0-3 FOR DETAIL

56-130-EEE	ASSEMBLY	SEE NOTES	SEE NOTES
PART NUMBER	TYPE OF COMPONENT	MATERIAL	FINISH

	THIRD ANGLE PROJECTION	
	MILLIMETERS [IN]	
SURFACE AREA	TOLERANCES UNLESS OTHERWISE NOTED	
VOLUME	UP TO 0.5 ±0.1	
	OVER 0.5 UP TO 6 ±0.2	
	OVER 6 UP TO 30 ±0.4	
	OVER 30 ±0.6	
	ANGLES ±5°	
PROPRIETARY ITEM	PER ASME Y14.5M-1994	
EXCEPT FOR USES EXPRESSLY GRANTED IN WRITING, INFORMATION DISCLOSED HEREON IS CONFIDENTIAL AND ALL RIGHTS, PATENT AND OTHERWISE, ARE RESERVED BY SOUTHCO, INC.		

<b>southco</b> <sup>®</sup>			
CONNECT • CREATE • INNOVATE			
DESCRIPTION			
56 PLUNGER			
THREAD-IN, PRISM-MINI			
SIZE	SYSTEM	DWG NO.	
A4	NX	J-56-130	
DRAWN BY	DATE	SCALE	SHEET
JQ/LC	28MAR2018	3:1	1 OF 1

PANEL PREPARATION