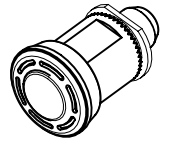


REVISION HISTORY			
REV	DATE	BY	DESCRIPTION
C	19APR2019	JQ/LC	PRN: P2019-1029



SCALE 1:1

NOTES:

A. INSTALLATION INSTRUCTIONS:

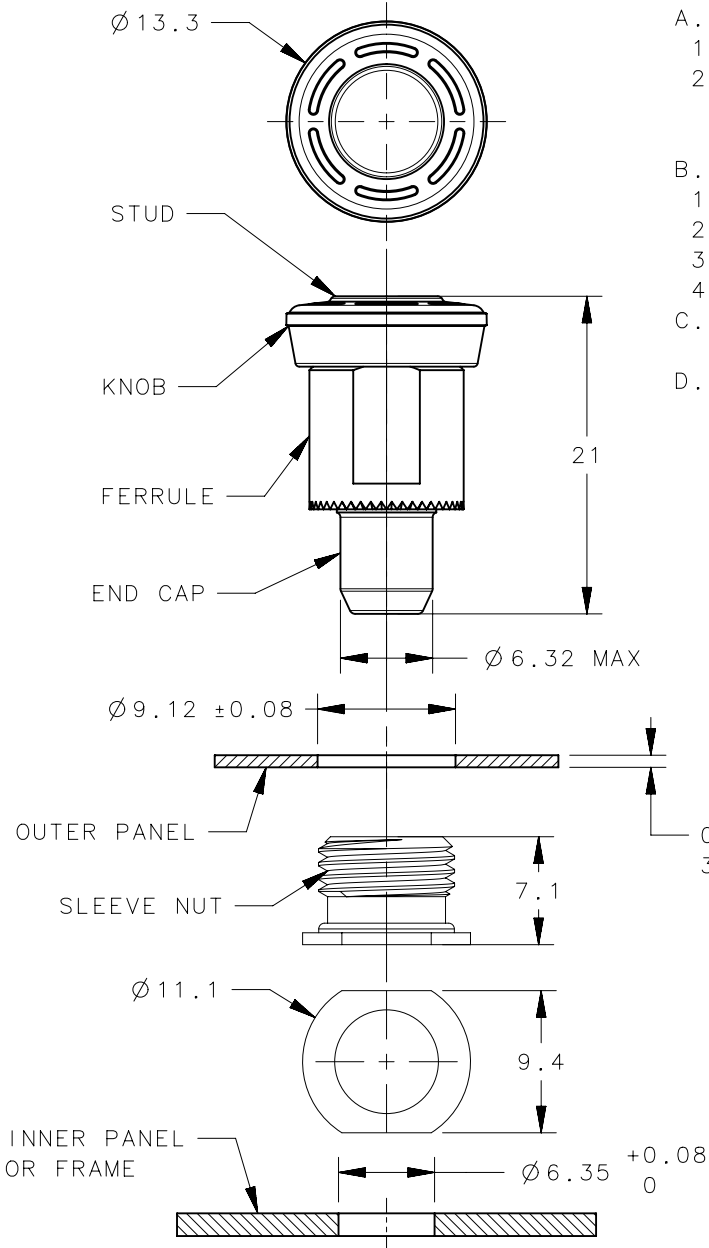
1. DRILL OR PUNCH  $\varnothing 9.12 \pm 0.08$  HOLE IN OUTER PANEL.
2. PRESS STUD FIRMLY TO HOLD TEETH OF FERRULE AGAINST PANEL. THREAD SLEEVE NUT INTO FERRULE AND TIGHTEN WITH WRENCH SOUTHCO PART NUMBER 56-0-22041-04.

B. MATERIAL AND FINISH:

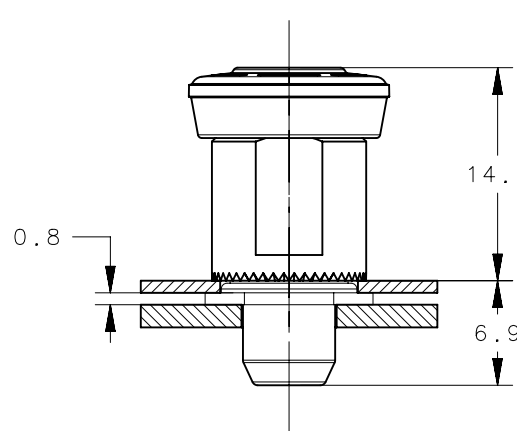
1. STUD: HARDENED STEEL, ZINC PLATE PLUS SEALER.
2. KNOB: PC/ABS, UL94 V0 RATED.
3. SPRING: 300 SERIES SATINLESS STEEL, PASSIVATED.
4. END CAP, FERRULE AND SLEEVE NUT: STEEL, ZINC PLATED PLUS SEALER.

C. COSMETIC SPECIFICATION: ALL SURFACES (UNLESS OTHERWISE SPECIFIED) ARE TO BE PER SOUTHCO SPECIFICATION S-121-02, CLASS B, FERRULE AND SLEEVE NUT CLASS C.

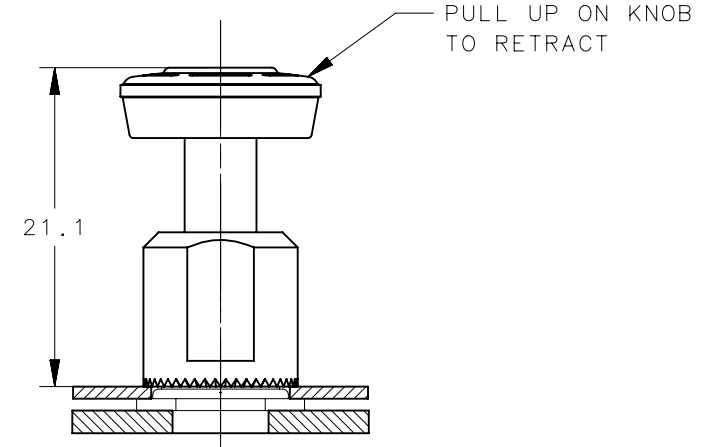
D. PARTS SHIPPED BULK.



PANEL PREPARATION



RELEASED



RETRACTED

"EEE" KNOB COLOR

000 BLACK

SEE J-47-0-3 FOR DETAIL

56-180-EEE	N/A	SEE NOTES	SEE NOTES
PART NUMBER	TYPE OF COMPONENT	MATERIAL	FINISH

THIRD ANGLE PROJECTION				<p><b>southco</b><sup>®</sup></p> <p>CONNECT • CREATE • INNOVATE</p>			
MILLIMETERS [IN]							
TOLERANCES UNLESS OTHERWISE NOTED		DESCRIPTION		56 PLUNGER			
UP TO 0.5 ±0.1		THREAD-IN, PRISM-SMALL		SIZE A4			
OVER 0.5 UP TO 6 ±0.2		SYSTEM NX		DWG NO. J-56-180			
OVER 6 UP TO 30 ±0.4		DRAWN BY JQ/LC		DATE 28MAR2018		SCALE 2:1	
OVER 30 ±0.6		PER ASME Y14.5M-1994		SHEET 1 OF 1		SHEET 1 OF 1	
ANGLES ±5°							
PROPRIETARY ITEM							
EXCEPT FOR USES EXPRESSLY GRANTED IN WRITING, INFORMATION DISCLOSED HEREON IS CONFIDENTIAL AND ALL RIGHTS, PATENT AND OTHERWISE, ARE RESERVED BY SOUTHCO, INC.							