

| REVISION HISTORY | | | |
|------------------|-----------|-------|-----------------|
| REV | DATE | BY | DESCRIPTION |
| B | 19APR2019 | JQ/LC | PRN: P2019-1029 |

NOTES:

A. INSTALLATION INSTRUCTIONS:

1. DRILL OR PUNCH $\varnothing 7.14 \pm 0.08$ HOLE IN OUTER PANEL.
2. PRESS STUD FIRMLY TO HOLD TEETH OF FERRULE AGAINST PANEL. THREAD SLEEVE NUT INTO FERRULE AND TIGHTEN WITH WRENCH SOUTHCO PART NUMBER 56-0-22041-03.

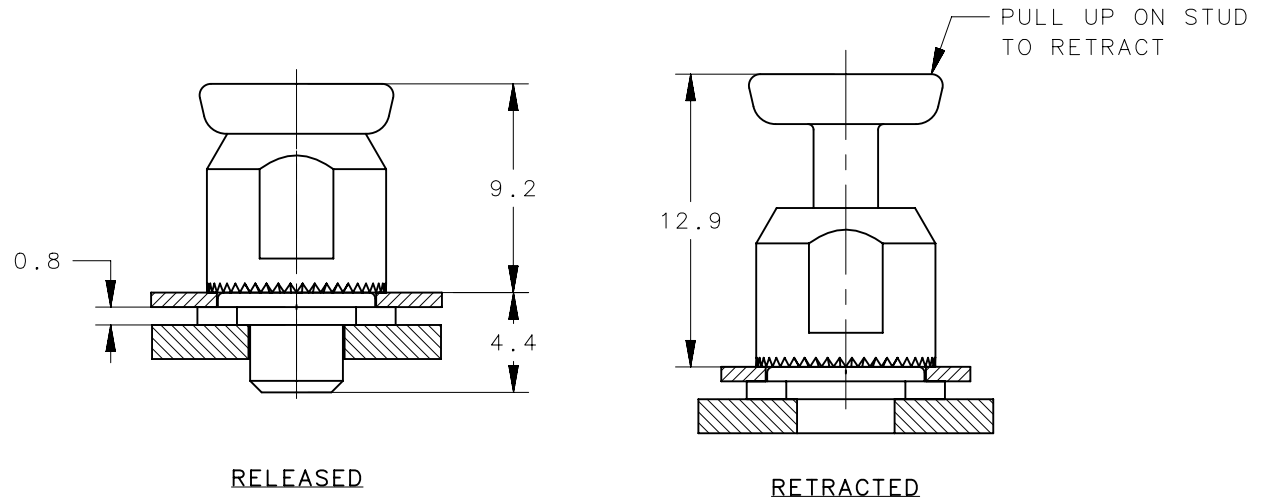
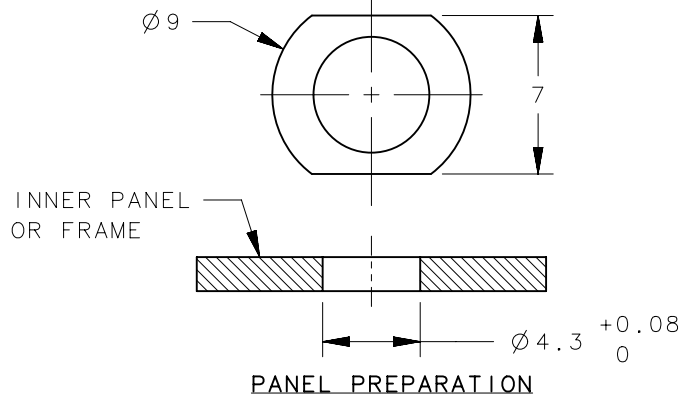
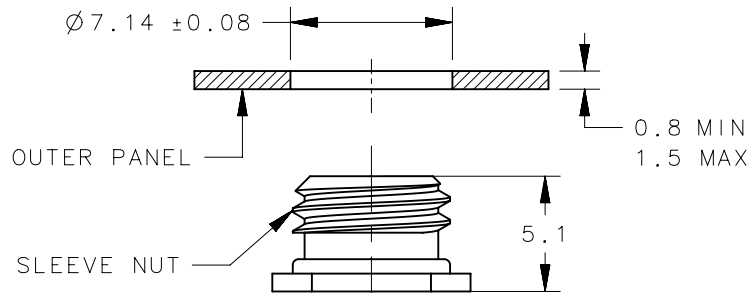
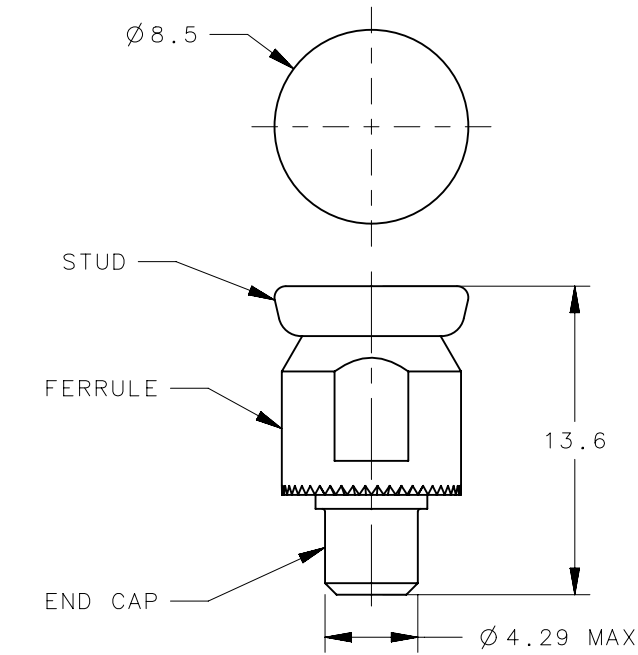


SCALE 1:1

B. MATERIAL AND FINISH:

1. STUD: HARDENED STEEL, ZINC PLATE PLUS SEALER.
2. SPRING: 300 SERIES SATINLESS STEEL, PASSIVATED.
3. END CAP, FERRULE AND SLEEVE NUT: STEEL, ZINC PLATED PLUS SEALER.

- C. COSMETIC SPECIFICATION: ALL SURFACES (UNLESS OTHERWISE SPECIFIED) ARE TO BE PER SOUTHCO SPECIFICATION S-121-02, CLASS B, FERRULE AND SLEEVE NUT CLASS C.
- D. PARTS SHIPPED BULK.



| | | | |
|-------------|-------------------|-----------|-----------|
| 56-30-15 | ASSEMBLY | SEE NOTES | SEE NOTES |
| PART NUMBER | TYPE OF COMPONENT | MATERIAL | FINISH |

| | | | | | | | |
|-----------------------------------|--|------------------------|--------|--|-------|--------|--|
| THIRD ANGLE PROJECTION | | | | <p>southco[®]</p> <p>CONNECT • CREATE • INNOVATE</p> | | | |
| MILLIMETERS [IN] | | | | | | | |
| TOLERANCES UNLESS OTHERWISE NOTED | | DESCRIPTION | | | | | |
| UP TO 0.5 | | 56 PLUNGER | | | | | |
| OVER 0.5 UP TO 6 | | THREAD-IN, BRIGHT-MINI | | | | | |
| OVER 6 UP TO 30 | | SIZE | SYSTEM | DWG NO. | | | |
| OVER 30 | | A4 | NX | J-56-30-15 | | | |
| ANGLES | | DRAWN BY | | DATE | SCALE | SHEET | |
| PER ASME Y14.5M-1994 | | JQ/LC | | 28MAR2018 | 3:1 | 1 OF 1 | |

PROPRIETARY ITEM
EXCEPT FOR USES EXPRESSLY GRANTED
IN WRITING, INFORMATION DISCLOSED
HEREON IS CONFIDENTIAL AND ALL
RIGHTS, PATENT AND OTHERWISE,
ARE RESERVED BY SOUTHCO, INC.