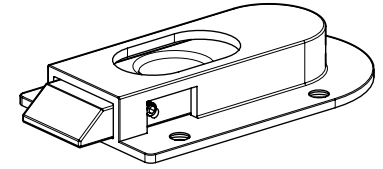
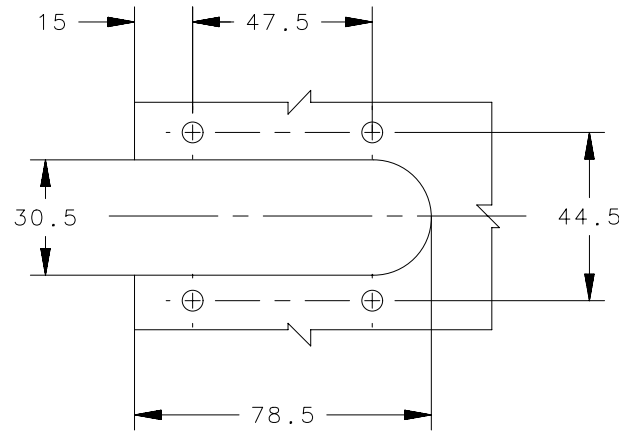
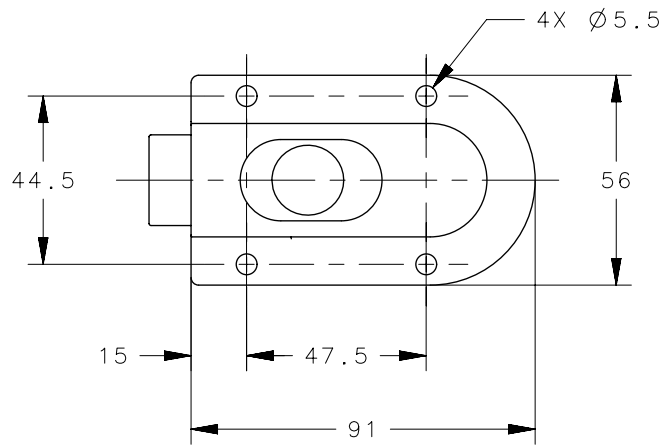
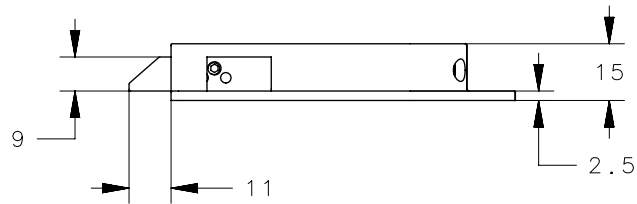


REVISION HISTORY			
REV	DATE	BY	DESCRIPTION
A	18MAY2015	DMS/YGC	PRN: P2015-0940



## PANEL PREPARATION



4	-	1	HOUSING	SEE NOTE 1	SEE NOTE 1
3	-	1	SLIDE	NYLON	BLACK
2	-	1	SCREW	304 STAINLESS STEEL	PASSIVATED
1	-	1	SPRING	304 STAINLESS STEEL	PASSIVATED
-	M5-60-309-8	1	LATCH ASSEMBLY	-	-
NO.	PART NUMBER	QTY	TYPE OF COMPONENT	MATERIAL	FINISH

THIRD ANGLE PROJECTION		 CONNECT • CREATE • INNOVATE			
MILLIMETERS [IN]					
SURFACE AREA		TOLERANCES UNLESS OTHERWISE NOTED		DESCRIPTION TRANSOM LATCH - SPRING BOLT	
VOLUME		ALL DIMENSIONS WITHOUT TOLERANCES ARE FOR REFERENCE ONLY.		SIZE A4	SYSTEM NX
PROPRIETARY ITEM <small>EXCEPT FOR USES EXPRESSLY GRANTED IN WRITING, INFORMATION DISCLOSED HEREON IS CONFIDENTIAL AND ALL RIGHTS, PATENT AND OTHERWISE, ARE RESERVED BY SOUTHCO, INC.</small>		PER ASME Y14.5M-1994		DWG NO. J-M5-60-309-8	
		DRAWN BY DMS/YGC	DATE 18MAY2015	SCALE 0.5:1	SHEET 1 OF 1

- NOTES:
- CF-8M STAINLESS STEEL (NOMINAL CAST EQUIVALENT OF 316 STAINLESS STEEL)