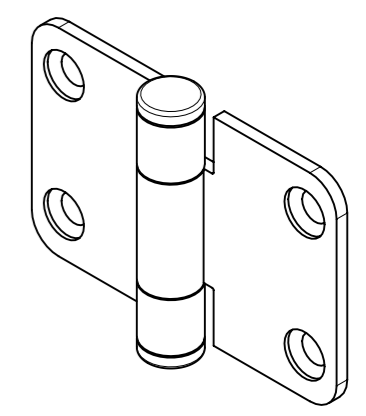
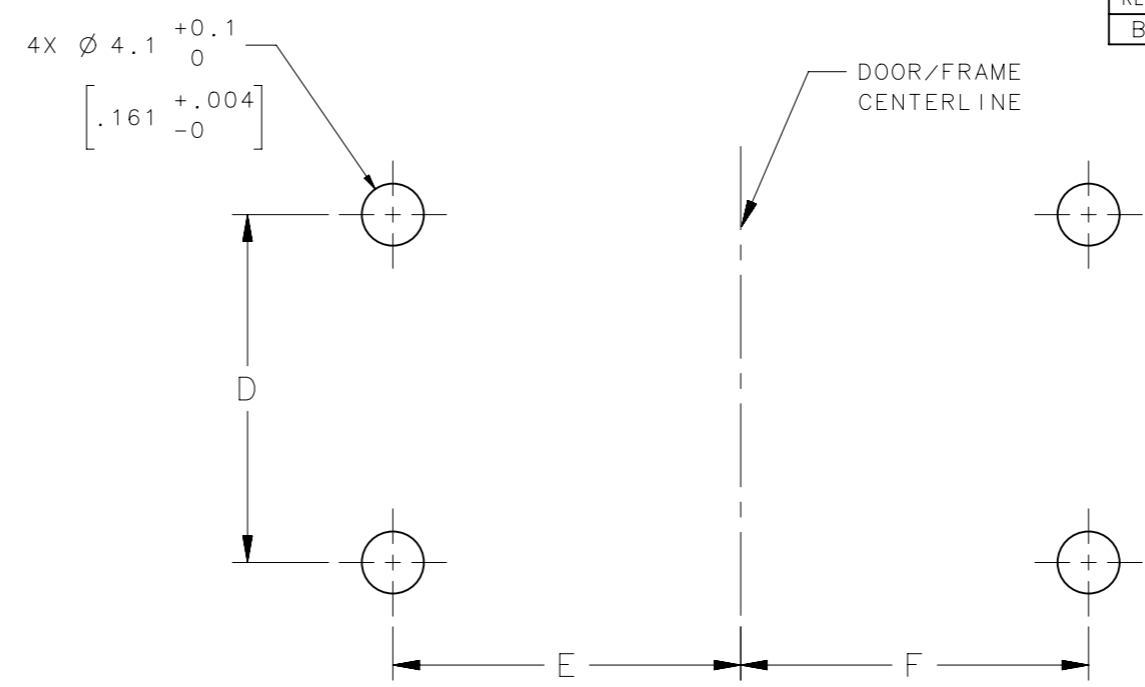
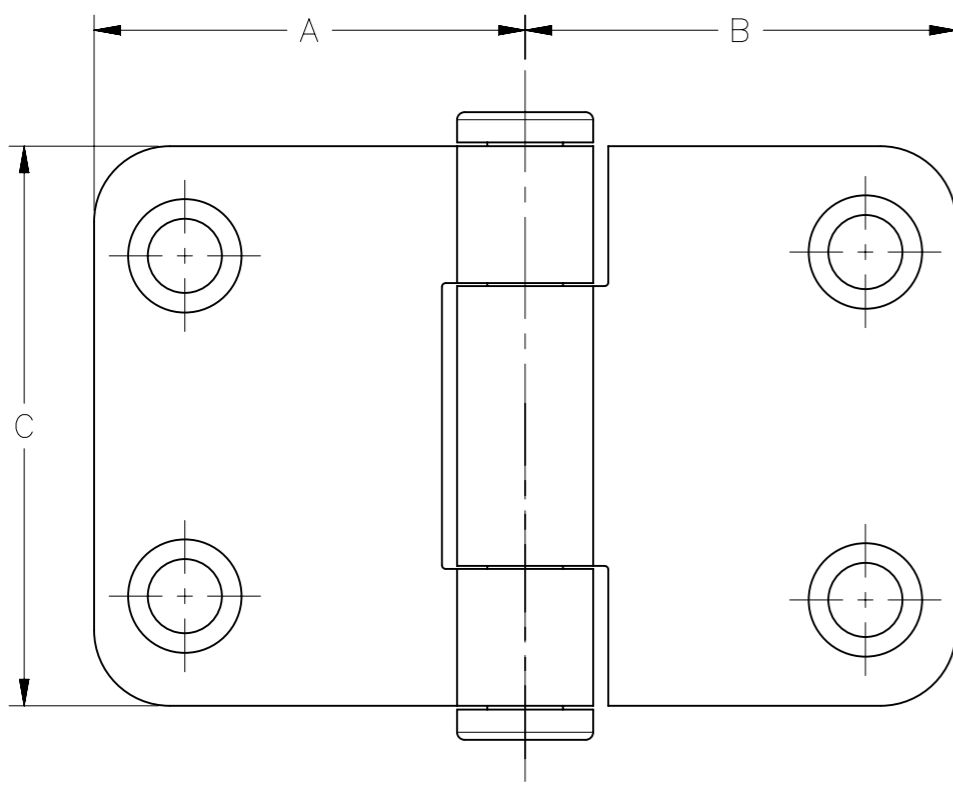
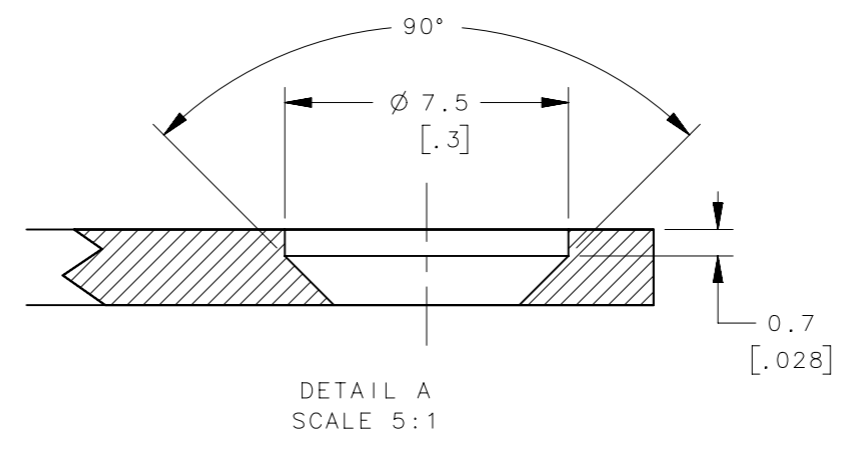
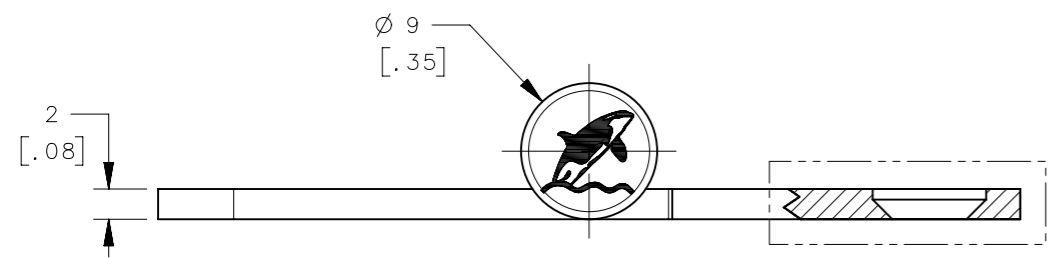


REVISION HISTORY			
REV	DATE	BY	DESCRIPTION
B	27JAN2015	CMS/MGG	PRN: P2015-0073



SCALE 1:1

PANEL PREPARATION



NOTES:

- A. MATERIAL AND FINISH:
OUTER/INNER LEAF AND HINGE PIN - 304 STAINLESS STEEL, POLISHED.
- B. DESIGNED TO ACCEPT M4 OR NO. 8 FLATHEAD MACHINE SCREW OR EQUIVALENT (NOT SUPPLIED).

								THIRD ANGLE PROJECTION				southco [®] CONNECT • CREATE • INNOVATE	
								MILLIMETERS [IN]					
								TOLERANCES UNLESS OTHERWISE NOTED		DESCRIPTION		HINGE, STAMPED	
								ALL DIMENSIONS WITHOUT TOLERANCES ARE FOR REFERENCE ONLY.		SIZE	SYSTEM	DWG NO.	
								PER ASME Y14.5M-1994		A3	NX	J-N6-5A-4V6	
										DRAWN BY	DATE	SCALE	SHEET
										VSM/VGV	12MAR2007	2:1	1 OF 1

ITEM	PART NUMBER	A	B	C	D	E	F
HINGE	N6-5A-4V6-24	29 (1.12)	29 (1.12)	37 (1.46)	23 (.89)	23 (.89)	23 (.89)
HINGE	N6-5A-4V5-24	25 (.97)	25 (.97)	37 (1.47)	23 (.89)	19 (.75)	19 (.75)
HINGE	N6-5A-4V4-24	19 (.75)	19 (.75)	37 (1.46)	23 (.91)	13 (.52)	13 (.52)

PROPRIETARY ITEM
EXCEPT FOR USES EXPRESSLY GRANTED
IN WRITING, INFORMATION DISCLOSED
HEREON IS CONFIDENTIAL AND ALL
RIGHTS, PATENT AND OTHERWISE,
ARE RESERVED BY SOUTHCO, INC.