

# LOCKONE®

*A Superior Locking Force*



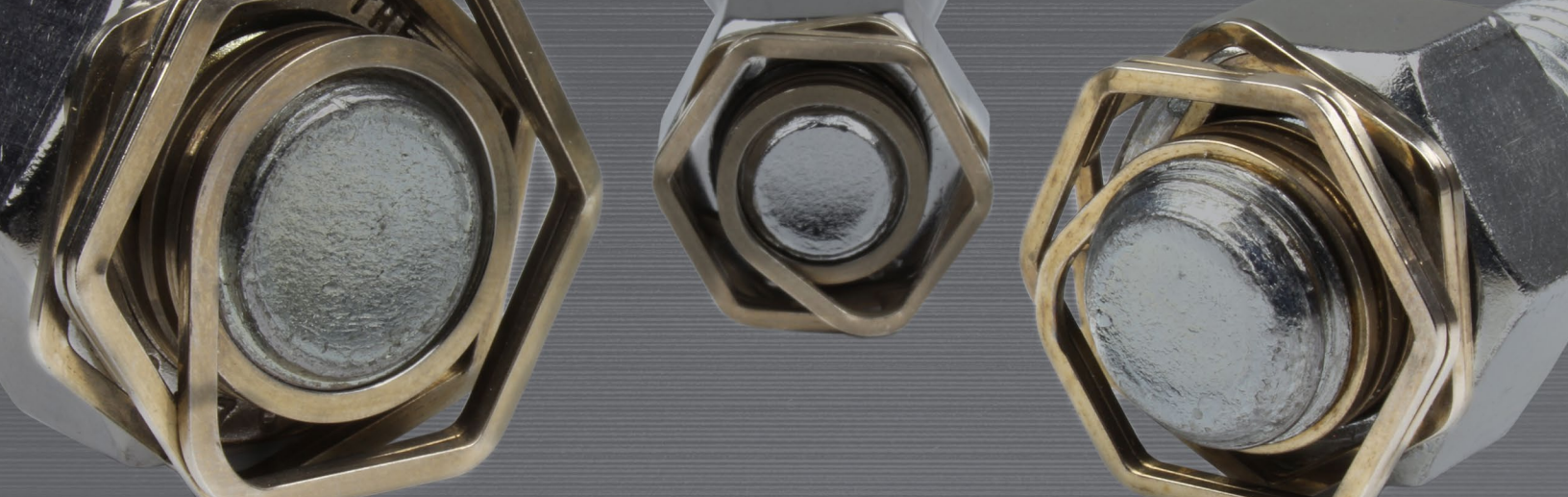
Vibration Tested In Accordance With NAS3350.

LockOne can be easily substituted into existing designs.

**KATO**®  
KATO FASTENING SYSTEMS, INC.



Phone: 757.873.8980  
Email: [Sales@katofastening.com](mailto:Sales@katofastening.com)  
Web: [www.katofastening.com](http://www.katofastening.com)



## KATO LockOne

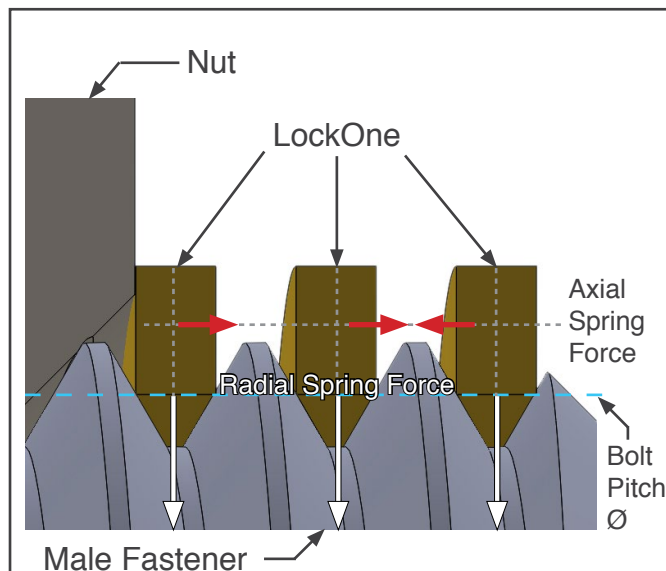
KATO's **NEW LockOne** is a revolutionary lightweight, positive locking fastener designed to prevent a standard nut from loosening free under vibration. Unlike nuts with nylon or locking compounds, LockOne won't come loose under vibration, and can be reused<sup>1</sup> without applying any hazardous chemical compounds.

Save on assembly costs! No expensive replacement nuts needed! LockOne can be used in a wide range of industries such as: electronics, aerospace, telecommunications, automotive, energy, and transportation.

## LockOne Features

- ✓ Fast and easy to install.
- ✓ No special tools required.
- ✓ FOD Free. No locking compounds needed.
- ✓ Corrosion resistant stainless steel.
- ✓ Reusable<sup>1</sup>, does not degrade with each cycle.
- ✓ Vibration-Proof, positive locking force.
- ✓ Designed for harsh environments.
- ✓ Ideal for weight sensitive applications.

1. Contact KATO for reuse guideline.



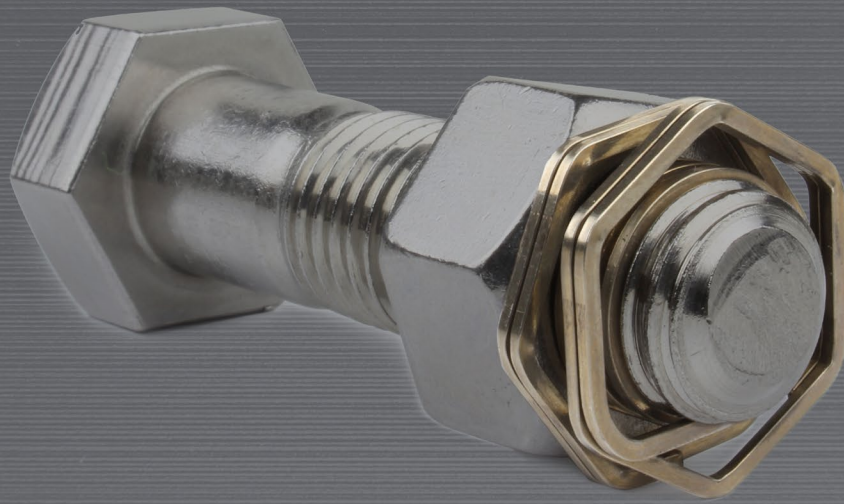
### Superior Force

Once positioned against the nut, LockOne engages the bolt along the pitch diameter inducing spring forces axially and radially. These forces hold LockOne in place, preventing bolts and nuts from loosening free under vibration.

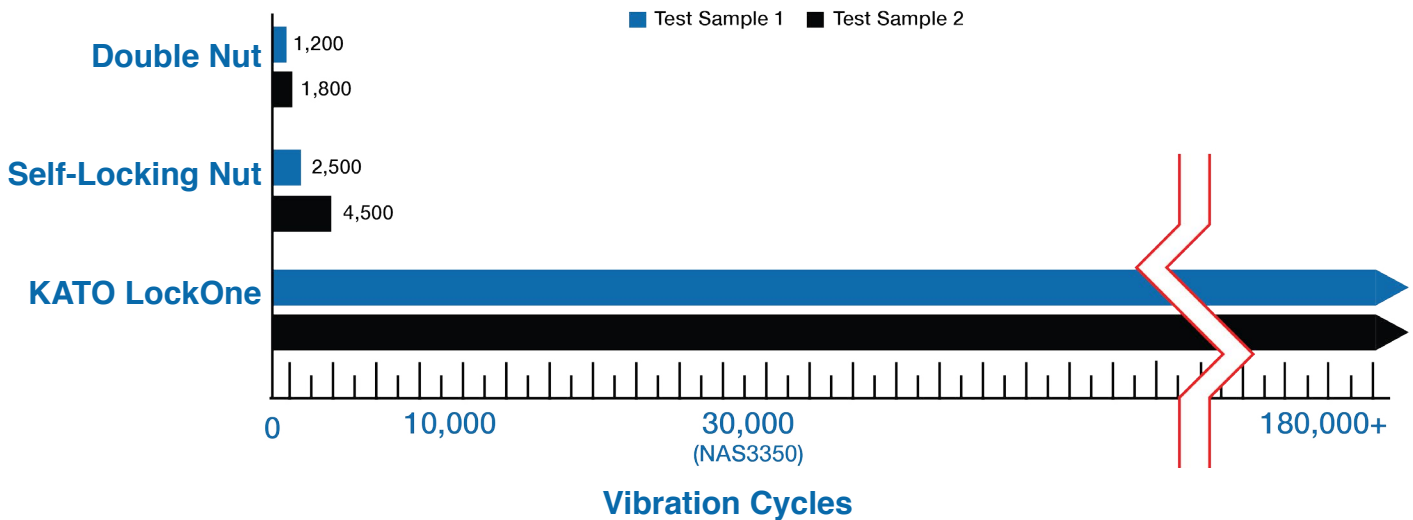
**Watch LockOne in action on our website.**

**KATO LockOne  
prevents the nut  
from loosening free  
from the bolt!**





## LockOne Performance



LockOne surpasses the testing requirements of NAS3350  
(National Aerospace Specification for impact type vibration test).

## Installation is Easy!



Simply load  
LockOne into the  
12-Point socket.



Load the standard nut  
on top of LockOne.

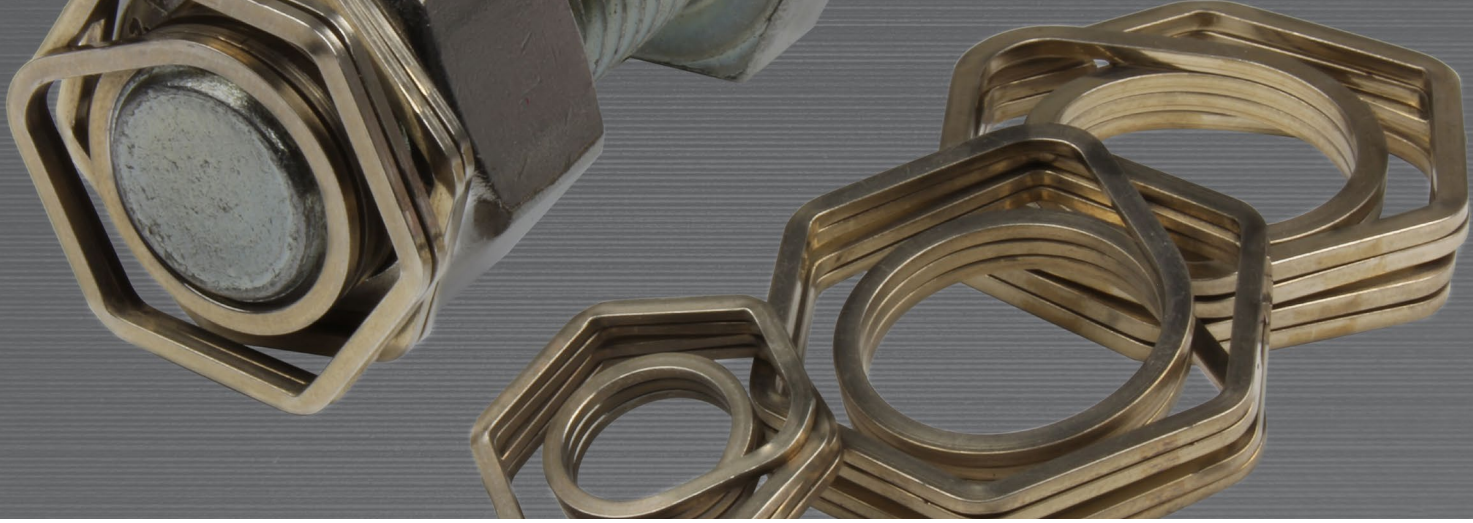


Tighten to application  
requirements.



If there is a gap between  
LockOne and the nut,  
simply hand tighten the  
LockOne until it is flush  
with the nut.

LockOne is so easy to use it can also be threaded on manually to existing applications. LockOne only requires three threads beyond the nut to work.



## Part Numbers & Specifications

### KLO C - 8

**Product Code:**

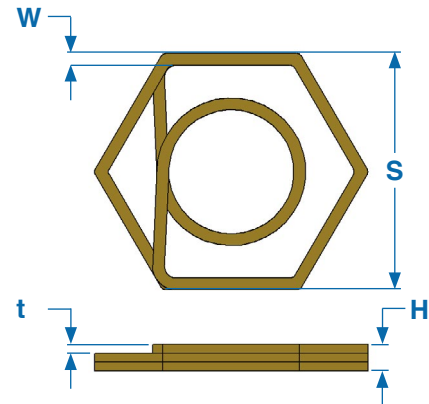
- **KLO** - KATO LockOne

**Thread Designation:**

- **C** - Coarse
- **M** - Metric

**Size Designation:**

- **Chart Below**



Thread Size	KATO LockOne	Technical Data				Weight
		S	H	W	t	
Unified Sizes						
1/4-20	KLOC-4	0.43	0.11	0.03	0.03	0.80 g
5/16-18	KLOC-5	0.50	0.11	0.03	0.03	0.80 g
3/8-16	KLOC-6	0.55	0.13	0.04	0.03	1.30 g
7/16-14	KLOC-7	0.65	0.14	0.05	0.03	2.31 g
1/2-13	KLOC-8	0.75	0.16	0.05	0.04	3.00 g
5/8-11	KLOC-10	0.93	0.18	0.06	0.04	4.80 g
3/4-10	KLOC-12	1.12	0.22	0.07	0.05	9.40 g
7/8-9	KLOC-14	1.30	0.22	0.07	0.05	10.10 g
1-8	KLOC-16	1.49	0.28	0.08	0.06	16.25 g
Metric Sizes						
M4X.7	KLOM-4	7	1.4	.50	.35	0.24 g
M5X.8	KLOM-5	8	1.6	.60	.40	0.24 g
M6X1	KLOM-6	10	2.0	.70	.50	0.45 g
M8X1.25	KLOM-8	13	2.5	.88	.63	0.95 g
M10X1.5	KLOM-10	17	3.0	1.05	.75	1.79 g
M12X1.75	KLOM-12	19	3.5	1.23	.88	2.83 g
M16X2	KLOM-16	24	4.0	1.40	1.00	4.78 g
M20X2.5	KLOM-20	30	5.0	1.75	1.25	9.39 g
M22X2.5	KLOM-22	32	5.0	1.75	1.25	10.12 g
M24X3	KLOM-24	36	6.0	2.10	1.50	16.21 g

**KATO Authorized Distributor**



**Phone:** 757.873.8980

**Email:** Sales@katofastening.com

**Web:** www.katofastening.com