

4

3

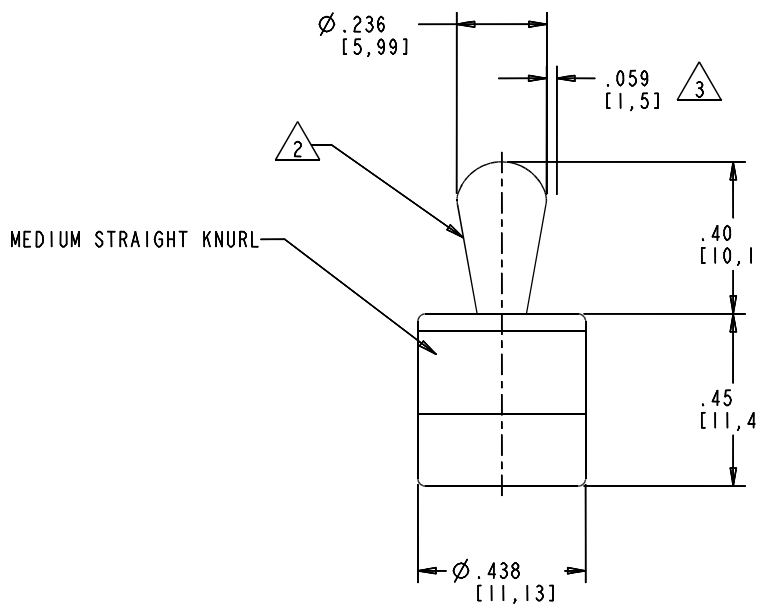
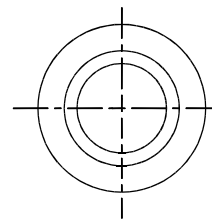
2

1

PART NO.
SLPL438A-502

PROPRIETARY NOTICE
"THIS DRAWING CONTAINS DESIGN AND OTHER INFORMATION WHICH ARE THE PROPERTY OF VLIER. THIS DRAWING MAY NOT, IN WHOLE OR IN PART, BE REPRODUCED OR USED FOR PURPOSES OF MANUFACTURE, OR OTHERWISE, WITHOUT THE PRIOR WRITTEN PERMISSION OF VLIER. ANY COPIES OF THIS DRAWING DISTRIBUTED FOR INFORMATIONAL PURPOSES, WHETHER UNDER THE TERMS OF A CONTRACT OR OTHERWISE, ARE TO BE RETURNED TO VLIER ON REQUEST OR WHEN THE PURPOSE FOR WHICH THEY WERE ISSUED IS ACCOMPLISHED. VLIER WILL TAKE ALL NECESSARY ACTION TO ENFORCE IT'S RIGHTS TO THIS PROPRIETARY INFORMATION."

REVISIONS				
ZONE	LTR	DESCRIPTION	DATE	APPROVED
	A	CONCEPT DRAWING		
	B	CHANGE PER CUSTOMER REQUEST		
	C	PRODUCTION RELEASE	LF 02/26/04	



NOTES:

- 1 MATERIAL:
BODY - ALUMINUM
PIN - STAINLESS STEEL, 300 SERIES
SPRING - MUSIC WIRE
- 2 FINISH:
BODY - GOLD IRIDITE
PIN - ELECTROPOLISHING TO RA 32
- 3 APPROXIMATE FORCE REQUIRED TO LATERALLY MOVE PIN .059 AS SHOWN IS 9.0 LBS.

IND NO.	QTY RECD	FSCN NO.	PART NUMBER	DESCRIPTION	MATL/NOTE	SPEC/NOTE
PARTS LIST						
UNLESS OTHERWISE SPECIFIED: REMOVE BURRS & SHARP EDGES SURFACE ROUGHNESS $\sqrt{32}$ DIMENSIONS APPLY AFTER FINISH CALLOUTS IN () ARE SI UNITS DIMENSIONS ARE IN INCHES TOLERANCES: DECIMALS .X \pm .03 ANGLES .XX \pm .015 \pm 0°30' .XXX \pm .005 DO NOT SCALE DRAWING			CONTRACT NO.		VLIER Brighton, Massachusetts 02135 A DIVISION OF HUTCHINSON®	
NEXT ASSY		FINAL ASSY		PREPARED	DATE	
		SLPL438A-502		L. FARRINGTON	02/18/04	
APPLICATION				CHECKED	DATE	
MATERIAL				T. CHAN	02/27/04	
FINISH				ENGINEER	DATE	
THIRD ANGLE PROJECTION				M. BENITEZ	02/27/04	
				MANUFACTURING	DATE	
				R. AKERBERG	02/27/04	
				QUALITY ASSURANCE	DATE	
				L. MARTIN	02/27/04	
		SIZE	FSCN NO.	DWG NO.		
		C	01226	SLPL438A-502		
		SCALE 4:1		SHEET 1 OF 2		

4

3

2

1