

**southco®**

PROPRIETARY ITEM - EXCEPT FOR USES EXPRESSLY GRANTED IN WRITING INFORMATION DISCLOSED HEREON IS CONFIDENTIAL AND ALL RIGHTS PATENT AND OTHERWISE ARE RESERVED BY SOUTHCO, INC.

## E3 VISE ACTION™ LATCH ASSEMBLY FLUSH MOUNTING BRACKET

DATE	DRAWN	CHKD	SCALE	DRAWING NUMBER
11OCT2004	AAB	RLR	NTS	TD-E3-12-J

REV	DATE	DRAWN/CHKD	DESCRIPTION							
A	01NOV2004	AAB/MDY								



### SOUTHCO PERFORMANCE GUIDELINES

THE PERFORMANCE GUIDELINES SHOWN ON THIS PAGE ARE SUPPLIED AS A GENERAL GUIDE ONLY, AS CONDITIONS VARY WITH EACH APPLICATION AND METHOD OF INSTALLATION. STRENGTH DATA GIVEN IS FOR FAILURE OF THE PRODUCT OR FOR SUFFICIENT DEFORMATION TO MAKE PRODUCT INOPERABLE. NO SAFETY FACTOR HAS BEEN APPLIED. IT IS RECOMMENDED THAT THE USER REQUEST A PRODUCT SAMPLE FOR TESTING TO DETERMINE THE SUITABILITY OF THE PRODUCT FOR THE PURPOSE INTENDED AND USER'S PARTICULAR APPLICATION.

### ASSEMBLY PART NUMBERS

E3-77-251-12      E3-77-252-12  
E3-77-251-24      E3-77-252-24

COMPRESSIVE STRENGTH - MAXIMUM WORKING LOAD: 445 N (100 lbf) \*  
- AVERAGE ULTIMATE LOAD: 1112 N (250 lbf) \*

\* LOAD DATA GENERATED USING A 6.35 mm (.250 in) THICK TEST PANEL USING M5 THROUGH BOLTS. RETENTION TO PANEL IS SUBJECT TO USER METHOD OF INSTALLATION, PANEL MATERIAL AND THICKNESS. LOAD CAPABILITY MAY BE REDUCED DEPENDING ON INSTALLATION.

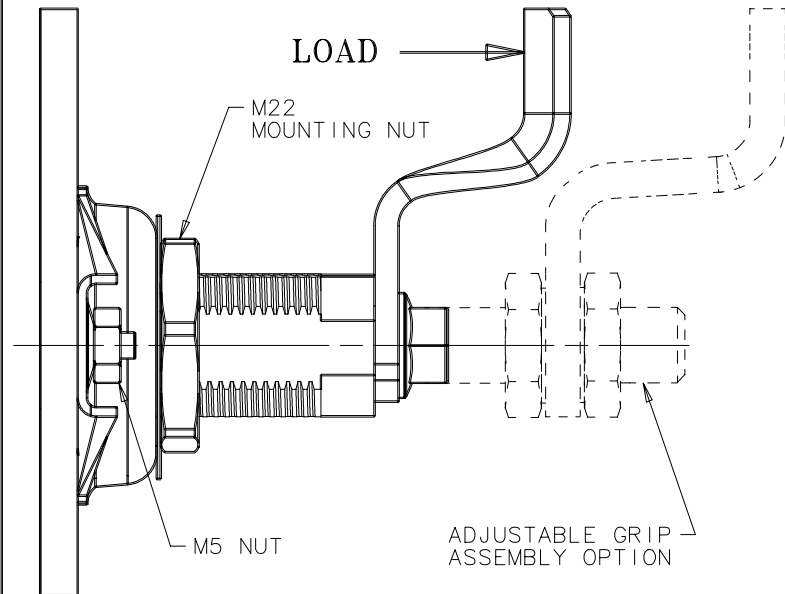
TORQUE LIMITS - TO DEVELOP A COMPRESSIVE FORCE ON THE PAWL OF 445 N (100 lbf), AN OPERATING TORQUE OF 9.18 N•m (82 lbf in) IS REQUIRED TO LOCK THE FASTENER.

RECOMMENDED TIGHTENING - M22 MOUNTING NUT: 20 N•m (177 lbf in)  
TORQUE: - M5 BRACKET MOUNTING SCREW: 1.7-4.5 N•m (15-40 lbf in)

SALT SPRAY EXPOSURE:  
- ACHIEVED 96 HOURS PER "ASTM B117-94" FOR STEEL BRACKET.  
- ACHIEVED 500 HOURS PER "ASTM B117-94" FOR STAINLESS STEEL BRACKET.  
- SOME SURFACE DISCOLORATION MAY OCCUR WITHOUT LOSS OF PRIMARY FUNCTION.

MAXIMUM WORKING LOAD - THE MAXIMUM RECOMMENDED LOAD AT WHICH THE PRODUCT CONTINUES TO FUNCTION PROPERLY.

AVERAGE ULTIMATE LOAD - THE LOAD THAT CAUSES FAILURE OR EXCESSIVE DEFORMATION WHICH RENDERS THE PRODUCT INOPERABLE.



REF: E3-124