

southco

SOUTHCO No. E3 HEX KEY OPERATED VISE ACTION LATCH

DATE	DRAWN	CHKD	SCALE	DRAWING NUMBER
12-16-86	GJC		1 : 1	J-E3-10-215-50

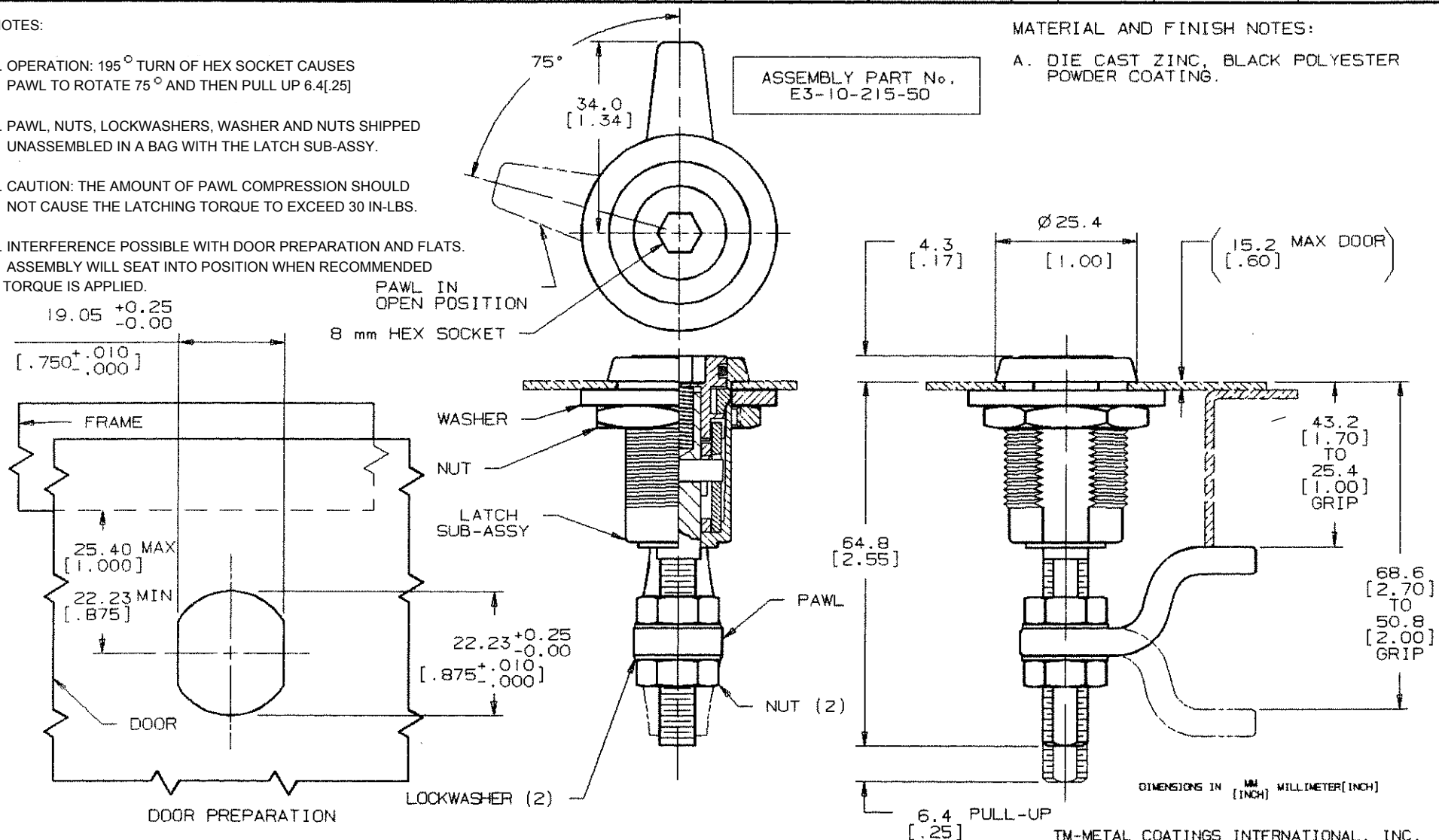
REV.	DATE	BY-CHKD	REVISIONS	ITEM	MAT'L & FINISH	ITEM	MAT'L & FINISH	ITEM	MAT'L & FINISH
C	11-28-87	GJC	PRN: E3-103 DAC NUTS	HOUSING	SEE NOTE A	RETAINER	POLYCARBONATE, BLACK	WASHER	1010 STEEL™ DACROTIZED
D	5-27-88	RES	PRN: E3-115, E3-118	CAM	1075 STEEL HARDENED, DACROTIZED™	O-RING	BUNA-N RUBBER	NUT	STEEL OR BRASS, DACROTIZED™
E	12 JAN. 93	KPL	PRN: S-1-03	CAP	SEE NOTE A	PIN	1008 STEEL, ZINC PL. CHROMATE DIP, YELLOW		
F	30JUL2012	CMS/JCK	PRN: P2012-0780	SHAFT	LOW CARBON STEEL™	PAWL	1010 STEEL™ DACROTIZED		
G	22AUG2023	SAK DMS	PRN: P2023-1537	SPRING	302 S/S, NATURAL	NUT (2)	STEEL DACROTIZED™		
				SLEEVE	1075 STEEL HARDENED, DACROTIZED™	LOCKWASHER (2)	SPRING STEEL, DACROTIZED™		

NOTES:

1. OPERATION: 195° TURN OF HEX SOCKET CAUSES PAWL TO ROTATE 75° AND THEN PULL UP 6.4[.25]
2. PAWL, NUTS, LOCKWASHERS, WASHER AND NUTS SHIPPED UNASSEMBLED IN A BAG WITH THE LATCH SUB-ASSY.
3. CAUTION: THE AMOUNT OF PAWL COMPRESSION SHOULD NOT CAUSE THE LATCHING TORQUE TO EXCEED 30 IN-LBS.
4. INTERFERENCE POSSIBLE WITH DOOR PREPARATION AND FLATS. ASSEMBLY WILL SEAT INTO POSITION WHEN RECOMMENDED TORQUE IS APPLIED.

MATERIAL AND FINISH NOTES:

- A. DIE CAST ZINC, BLACK POLYESTER POWDER COATING.



PROPRIETARY ITEM - EXCEPT FOR USES EXPRESSLY GRANTED IN WRITING
INFORMATION DISCLOSED HEREON IS CONFIDENTIAL AND ALL RIGHTS PATENT
AND OTHERWISE ARE RESERVED BY SOUTHCO, INC.

PAT. 4, 556, 244 UK 2, 153, 426
PAT. 4, 583, 175 UK 2, 158, 866
UK 2, 172, 334

DRAWING NUMBER
J-E3-10-215-50