

M3 Compression System

Remote compression latch

- Consistent compression driven by rotational rod
- Adjustable grip
- Meets NEMA 4 / IP66 and EMI standards
- Can be driven by hand, tool or key-locking actuators

Material and Finish

Zinc alloy and steel, zinc plated

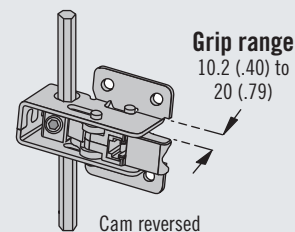
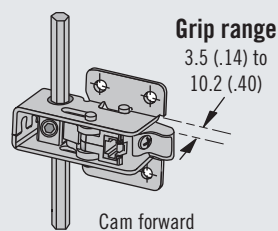
Performance Details

Max. static load:

890 N (200 lbf) per latch

Average ultimate load:

1335 N (300 lbf)



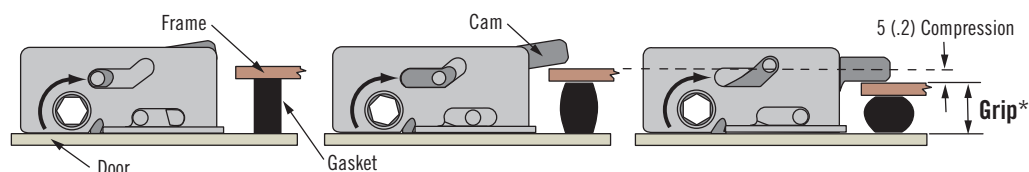
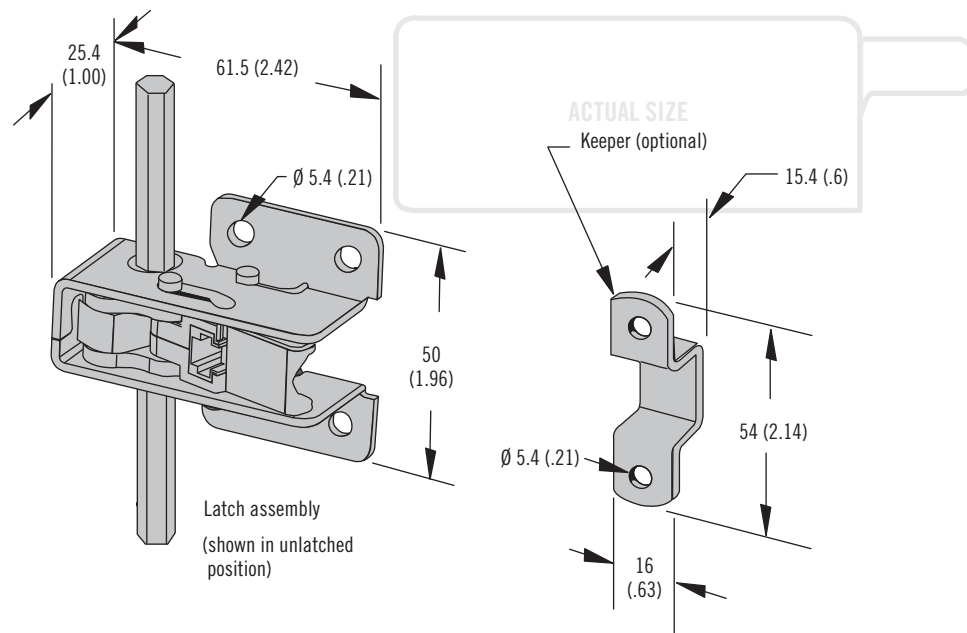
Notes

Do not exceed 20 (.79) grip range with cam reversed

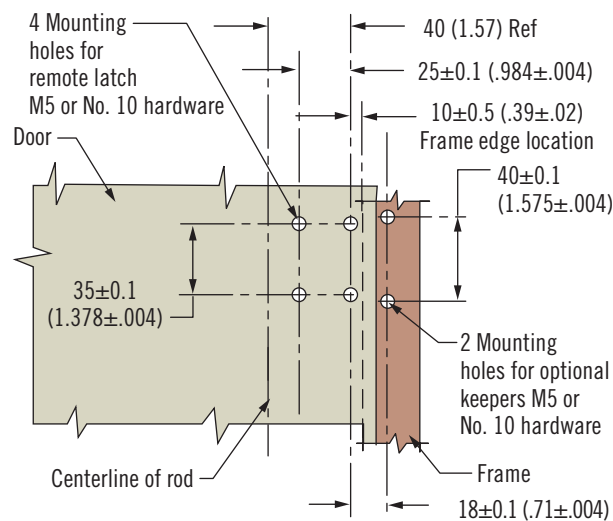
Part Number

The complete system consists of:
Remote compression latch and/or optional keeper (see page 210)
Actuator (see pages 211-214)
Rods (see page 215)

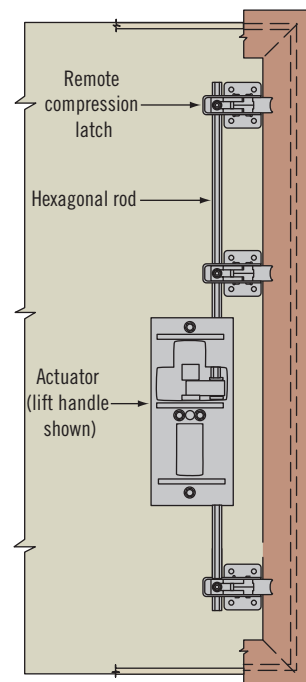
Order each component separately



* Measure your **Grip** from the latch mounting surface to the inside frame surface, with gasket compressed



Inside view



Part Number	
Remote compression latch	M3-50
Keeper (optional) use for grip ranges 15 - 30 (.59 - 1.18)	M3-51

M3 Compression System

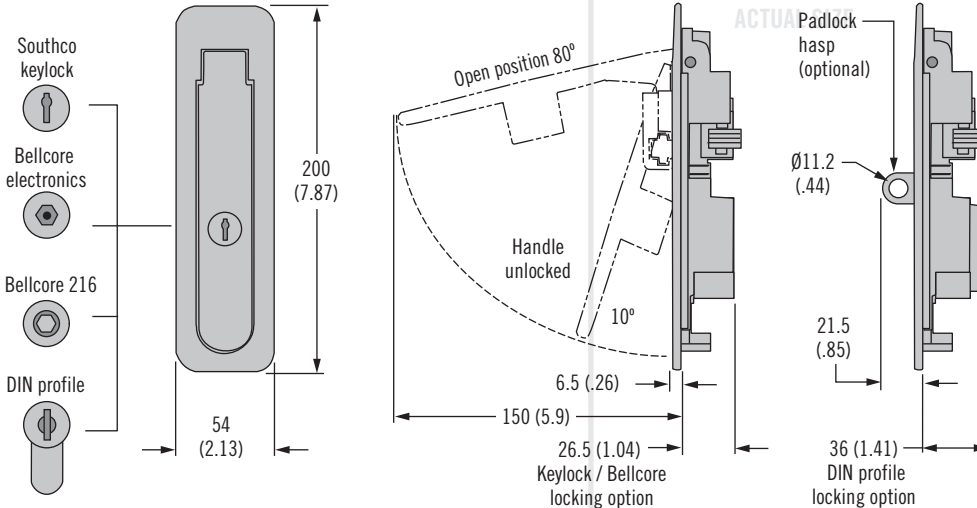
Actuators · Lift handle



211

Lift Handle

Locking options



- Suitable for left and right side latching
- Meets NEMA 4/ IP66 and EMI standards
- Ejecting handle

Material and Finish

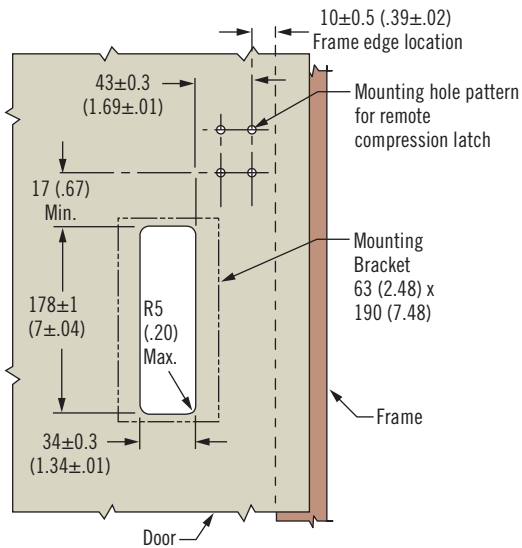
Zinc alloy black powder coated and steel, zinc plated

Sealing Notes

NEMA 4 / IP66 achieved using gasket supplied

DIN Profile Key Part

M3-0-36406



P Padlock option

- 0 Non padlock
- 1 Padlockable

D Door thickness range

- 10 1.5 - 3 (.06 - .12)
- 11 3 - 4.5 (.12 - .18)
- 25 24 - 25.5 (.94 - 1.0)

M3 - 40 - L P - D

L Lock style

- 10 Key-locking keyed alike CH751 (two keys supplied)
- 11 DIN profile supplied keyed alike 347876 (three keys supplied)
- 12 DIN profile, lock not supplied
- 13 Push button
- 16 Bellcore 216
- 17 Bellcore electronics

Part Number Selection

Actuator only

The complete system consists of:
Remote compression latch and/or optional keeper (see page 210)
Actuator (see page 211-214)
Rods (see page 215)

Order each component separately



M3 Compression System

Actuators · Push-button handle

- Suitable for left and right side latching

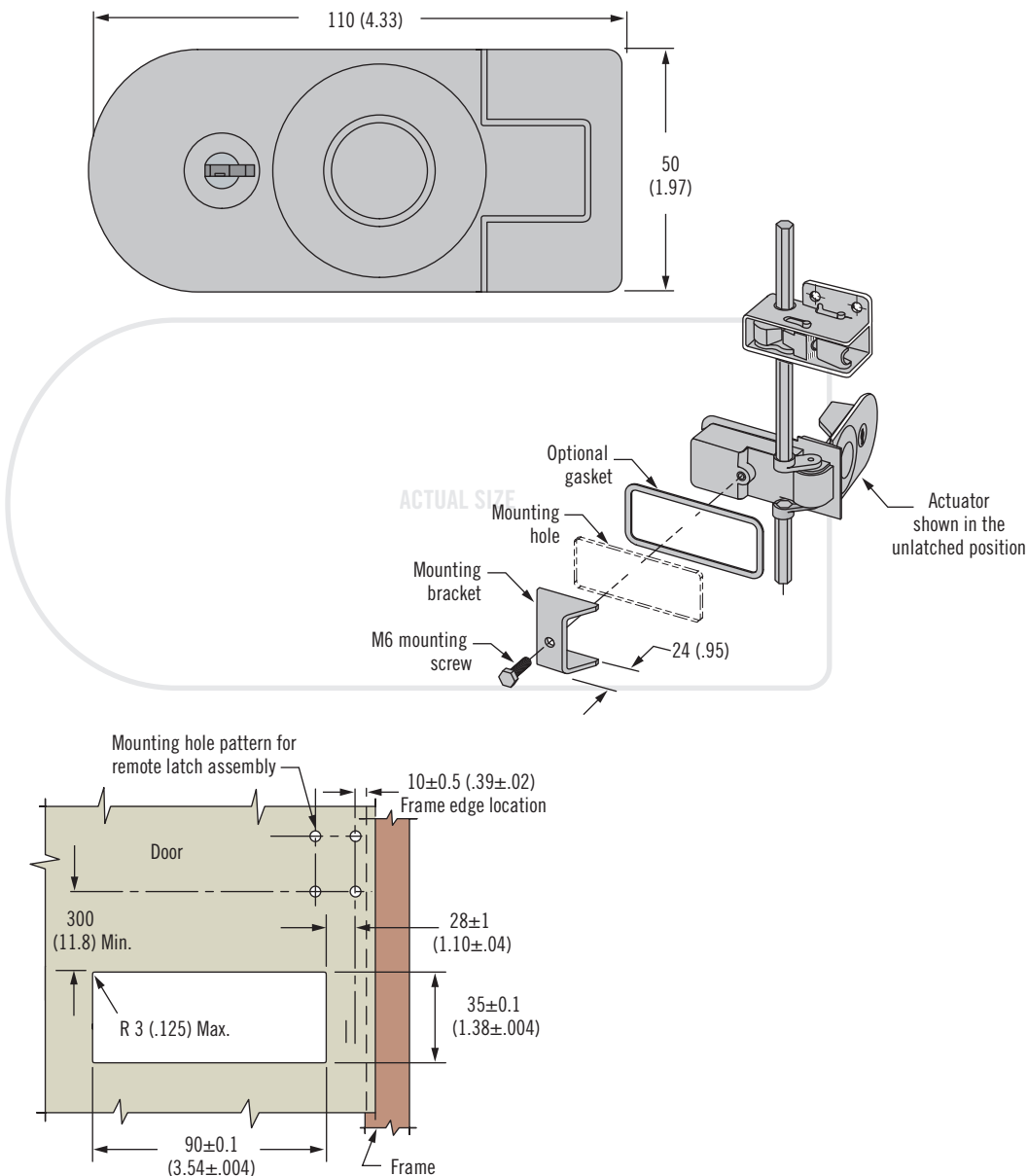
Material and Finish

Zinc alloy, black powder coated and steel, zinc plated

Sealing Notes

NEMA 4 / IP66 achieved using optional gaskets (ordered separately)

Push-Button Handle



Part Number

Actuator and sealing gasket only see table

The complete system consists of:
Remote compression latch and/or optional keeper (see page 210)
Actuator (see pages 211-214)
Rods (see page 215)

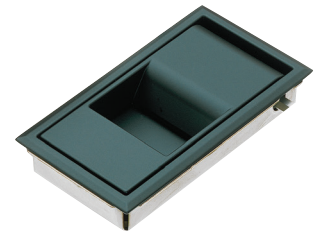
Order each component separately

Actuator	Door Thickness Range	Part Number
Push-button handle	0 - 5 (0 - .20)	M3-90
	5 - 10 (.20 - .39)	M3-92
Push-button handle with key-lock	0 - 5 (0 - .20)	M3-91
	5 - 10 (.20 - .39)	M3-93

Sealing Gasket Part Number
C5-82

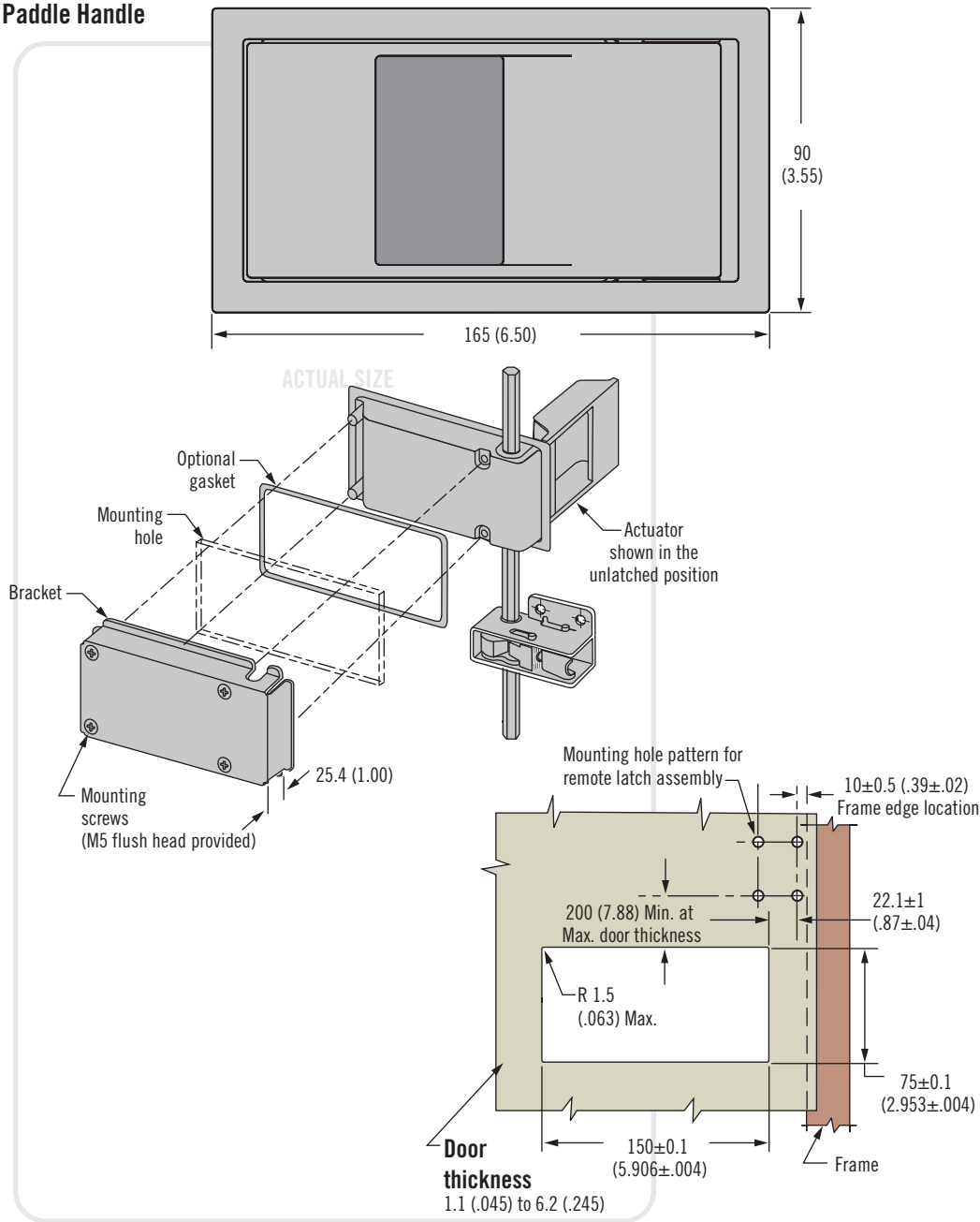
M3 Compression System

Actuators · Paddle handle



213

Paddle Handle



- Suitable for left and right side latching

Material and Finish

Zinc alloy, black powder coated and steel, zinc plated

Sealing Notes

NEMA 4 / IP66 achieved using gasket supplied

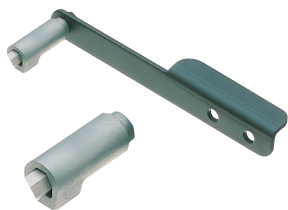


Part Number

Actuator and gaskets only see table
The complete system consists of:
Remote compression latch and/or optional keeper (see page 210)
Actuator (see pages 211-214)
Rods (see page 215)
Order each component separately

Actuator	Part Number
Paddle (includes bracket and screws)	M3-10
Paddle with key-lock (includes bracket and screws)	M3-17

Gasket Type	Part Number
Environmental	M3-12
EMC	M3-13



M3 Compression System

Actuators · Door edge lever · Concealed

- Simple actuator for top or bottom of door

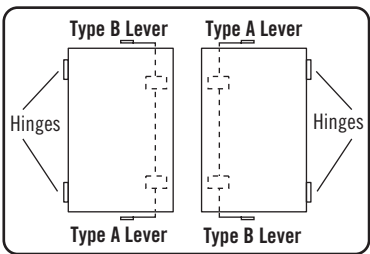
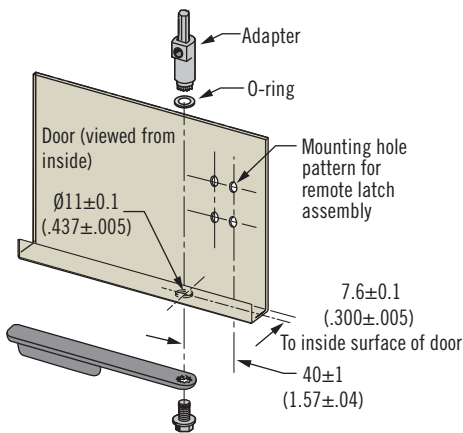
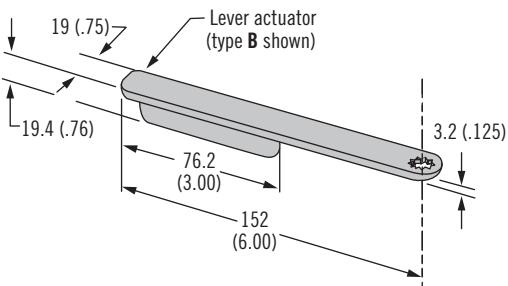
Material and Finish

Door edge lever: Zinc alloy, black powder coated and steel, zinc plated
Adapter: Zinc alloy, chemical protective film
Concealed: Zinc alloy, chemical protective film

Notes

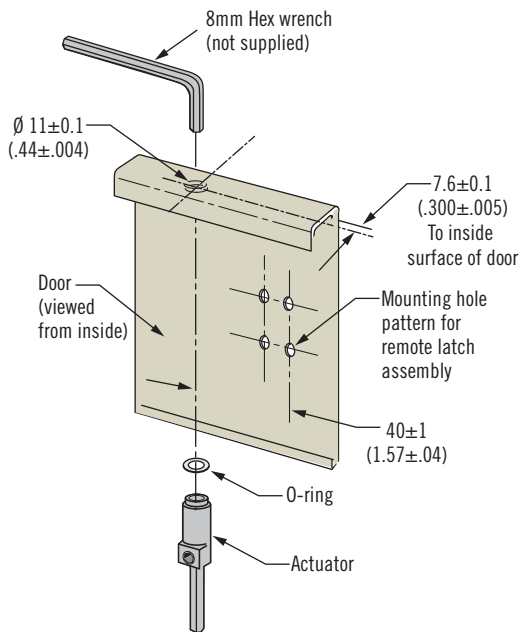
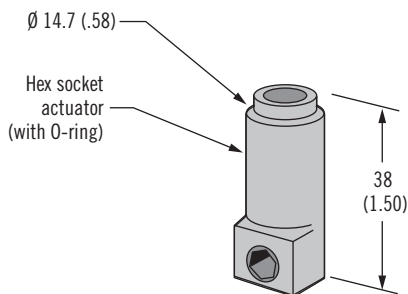
Concealed: Operated by 8mm hex wrench (not supplied)

Door Edge Lever



Viewed from outside

Concealed



Part Number

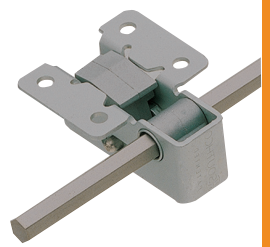
Actuator only see table
The complete system consists of:
Remote compression latch
Remote compression latch and/or optional keeper (see page 210)
Actuator (see pages 211-214)
Rods (see page 215)
Order each component separately

Actuator	Type	Part Number
Lever (includes adapter and O-ring)	A	M3-31
	B	M3-32

Actuator	Part Number
Hex socket with O-ring seal	M3-30

M3 Compression System

Rods and Calculator



215

Material and Finish

Stainless steel, natural

Notes

If you choose to use your own rods, they should have no more than 1 degree of twist in any meter length

Part Number

Rod only see table

The complete system consists of:
Remote compression latch and/or optional keeper (see page 210)
Actuator (see pages 211-214)
Rods (see page 215)
Order each component separately

Calculation Notes

Once you have completed the calculation please order the following parts:

- 1 x Actuator
- 1 or 2 rods to correct length
- Number of compression latches determined from calculation

Hexagonal Rod

Hex Rod Length	Part Number
Hex rods (length measured in centimeters)	125 cm
	155 cm
	185 cm

Calculator

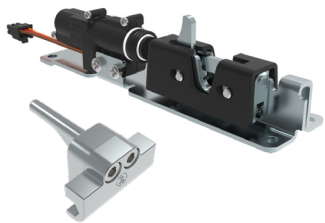
To determine the minimum number of remote compression latches you require along the door edge:

$$N = \frac{L \times R}{470}$$

N = Number of compression latches along door edge (rounded to the nearest whole number)
 L = Total length of gasketing material in millimeters
 R = Gasket compression rate in N / mm

Example: $\frac{5200 \text{ mm} \times 0.3 \text{ N / mm}}{470} = 3.28 = 3 \text{ latches}$

Remote compression latches should be evenly spaced along edge of door



M3 Compression System

Electronic Lock

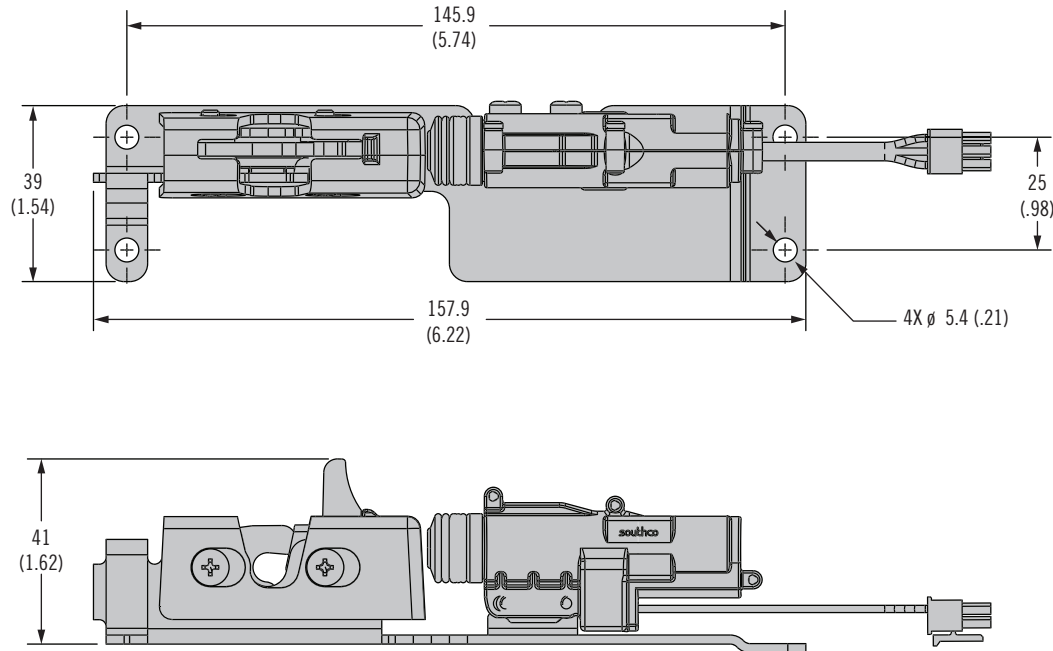


- Electronically controlled locking
- Sealed for outdoor use
- Retrofit existing M3 systems without disassembly

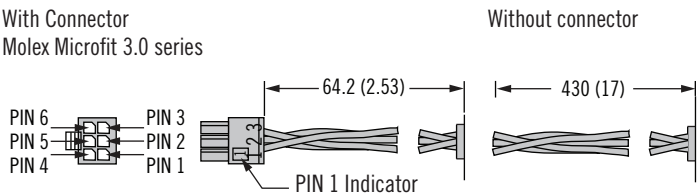
Wire Color Code / Connector Pin Assignment:

- PIN 1: Extend (+), Orange Wire
- PIN 2: Retract (+), Red Wire
- PIN 3: Ground (-), Black Wire
- PIN 4: Not used
- PIN 5: Not used
- PIN 6: Not used

Electronic Rotary Latch Mechanism



Latch Wiring Connections



Part Number

Latch Mechanism: See table
Striker: M3-58
Order latch and striker separately

Part Number Selection

R4 - 05 - 2 **B** - 4E **C** 1 - 20

B Base Mounting Style

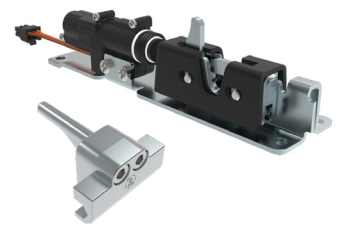
- 0 Thru holes
- 5 Adhesive backing

C Connector Options

- B 12V, with connector
- F 5V, with connector
- K 12V, without connector
- P 5V, without connector

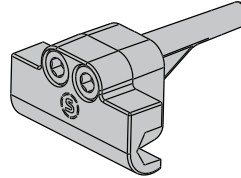
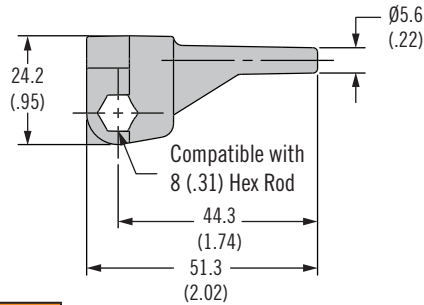
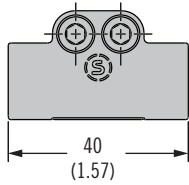
M3 Compression System

Electronic Lock



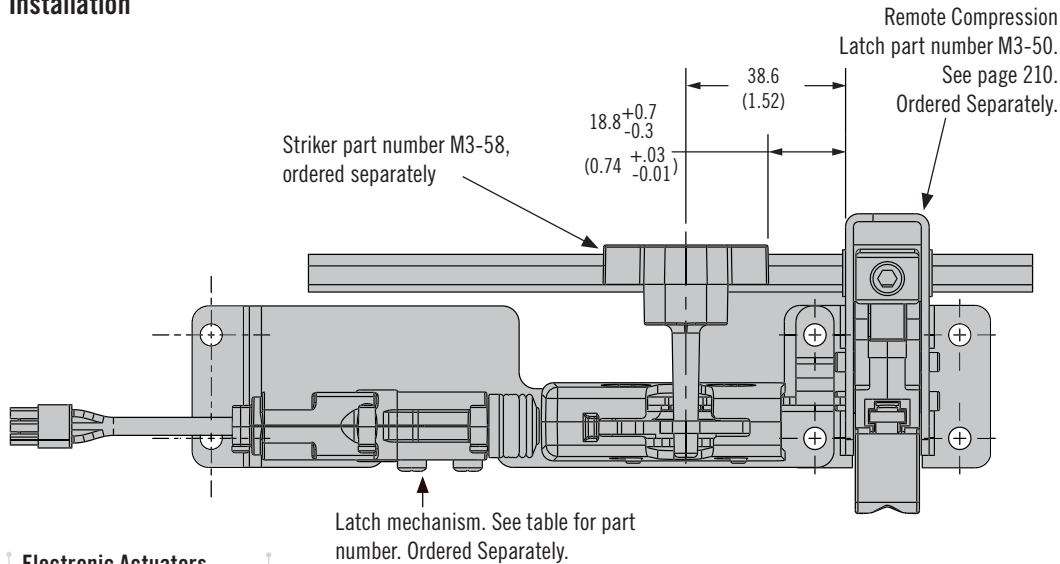
215B

Hexagonal Rod Striker



Part Number	
Hexagonal Rod Striker	M3-58

Installation



Material and Finish

Latch Mechanism
Housing: Stainless Steel
Cam, trigger: Stainless Steel
Springs: Steel, zinc plated
Pins: Stainless Steel
Electronic Actuator
Enclosure, Output Cam: Nylon, Acetal
House Assembly Screws: Stainless Steel
Striker: Zinc, Chromate sealer

Electronic Specifications

Supply Voltage: 5 or 12VDC
Operating Current: Less than 300 mA
Operating Temperature: -20°C - 60°C
Operating Humidity: 85% max
No condensation

Notes:

Connector version uses Molex brand Microfit 3.0
Visit southco.com to download further installation and operation details.

Electronic Actuators

See page 48

